



- AMERICAN SPIRIT 820 -

41 CONSTITUTION WAY





Great Room



Great Room and Kitchen

– AMERICAN SPIRIT 820 –

41 CONSTITUTION WAY

Amidst towering pines and tucked discretely into picture-perfect alpine meadows, homes in the American Spirit community at Yellowstone Club offer immediate access to thousands of acres of Yellowstone Club's Private Powder. Located adjacent to beautiful Rainbow Lodge, American Spirit boasts majestic views stretching from Eglise and Pioneer Mountains across to Lone Peak, the Spanish Peaks and beyond. Nearly every lot abuts a ski trail to create ski accessibility to the American Spirit Lift and Lake Lift.

American Spirit 820 is a singular, modern mountain home with state-of-the-art amenities. Its clean lines, carefully considered interior design, and incomparable furnishings guarantee owners that their home will stand in a class all its own at the Club. Upon entering the 6,806 square foot home, the open great room, open kitchen, and dining area exemplify the contemporary, sleek feel that defines the residence. Expansive views of Pioneer Mountain and the Gallatin Range cascade in through the great room and dining room windows, which fill the space with light throughout the day. Ultramodern appliances and finishes outfit the avant-garde kitchen, and a wrap-around couch in the great room will provide ample seating for gatherings around the warm fireplace in winter months. Two en-suite guest rooms with floor-to-ceiling windows and a well-situated powder room round out the main level of this home.

A breathtaking master suite comprises the upper level of the home, and a view-filled balcony and fireplace make the space an ideal retreat after a day on the slopes or golf course. The expansive master bath, separated from the bedroom by a spacious walk-through master closet, includes a massive, beautiful marbled shower. Owners will be sure to revel in the privacy and space this master floor allows.

The lower level of the home includes a recreational room complete with a sleek poker table, cozy couch, modern furnishings with pops of color, and a walk out patio with hot tub. Two additional guest suites and a whimsical bunk room provide ample space for guests and family. After skiing into the lower level ski room, a cutting edge sauna, cool down tub, shower, and powder room await skiers just across the hall and provide immediate warmth and comfort from chilly, clear, and fun-filled Montana winter days on the slopes.



Dining Room

– AMERICAN SPIRIT 820 –

41 CONSTITUTION WAY

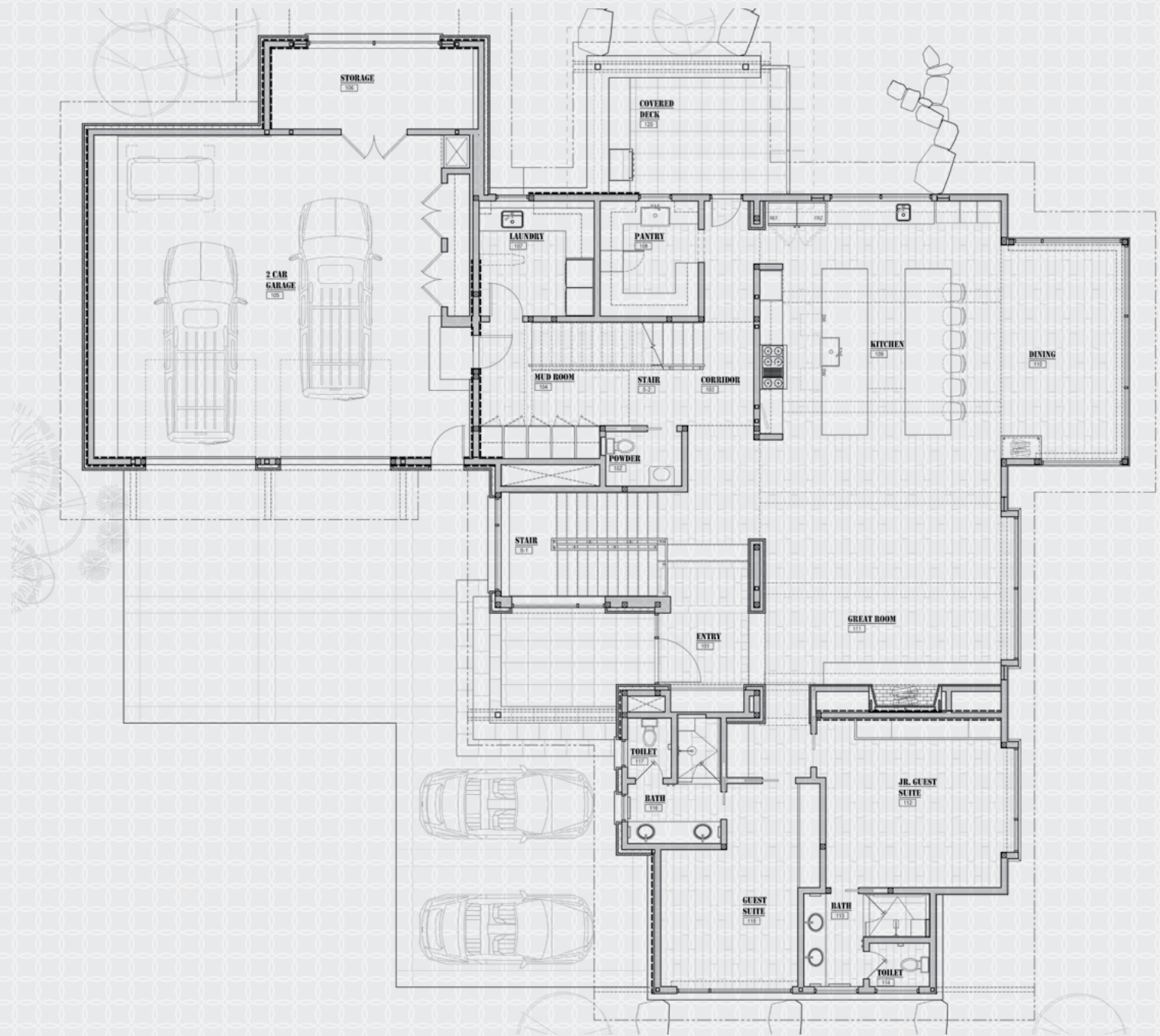
FEATURES

- .43 acre lot
- 6,806 livable square feet
- 5 bedrooms + 1 bunk room
- 6 bathrooms + 2 powder rooms
- 3 car garage
- Furnished
- Immediate ski access
- Views of Lone Peak, the Spanish Peaks, Pioneer Mountain
- Close proximity to Rainbow Lodge and all of its amenities
- Warren Miller Lodge, YC's Clubhouse, and golf course accessible via a short drive
- Refreshingly modern interior finishes, including a state-of-the-art indoor spa

This residence is located within Yellowstone Club, a 13,600 acre private, gated community located in Big Sky, Montana. Yellowstone Club is the world's only private ski and golf community, encompassing thousands of acres of private skiing along with a championship golf course designed by Tom Weiskopf. Additionally, whether looking to savor spectacular mountain panoramas, explore the vast wilderness or enjoy high-quality amenities, Yellowstone Club offers everything from fly fishing, hiking and biking trails to fine dining and spa services. Professional SnowSports, golf and outdoor recreation programs, along with dedicated children's activities, round out the unique Montana experience that is Yellowstone Club.

- AMERICAN SPIRIT 820 -

6,806 HEATED LIVABLE SQUARE FOOTAGE

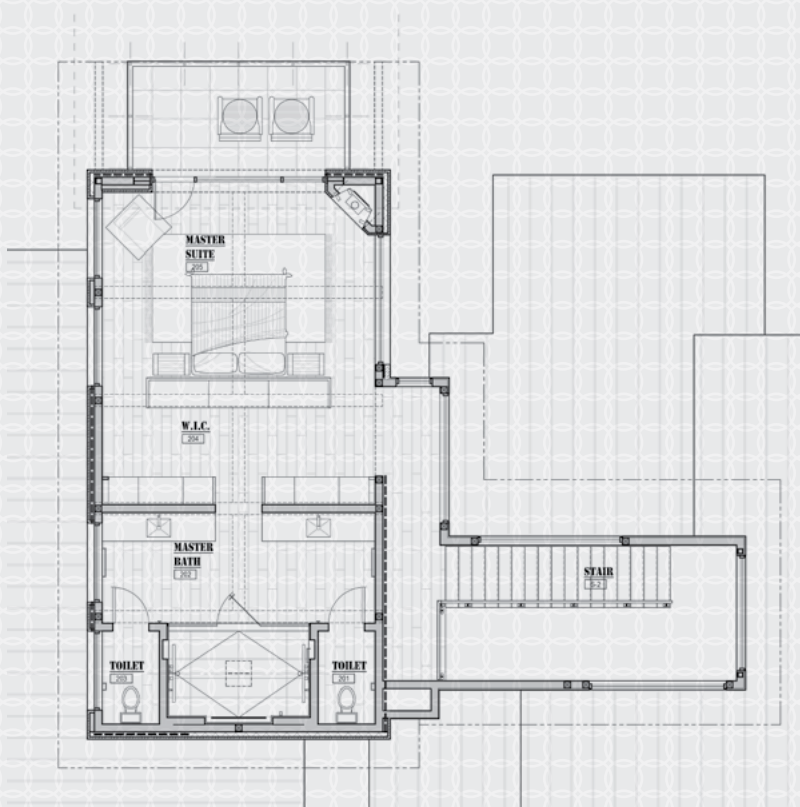


MAIN LEVEL

2 Guest Suites / 2 Guest Bathrooms
Great Room / Kitchen / Dining Room / Powder Room
Mud Room / Laundry Room / Storage
2-Car Garage

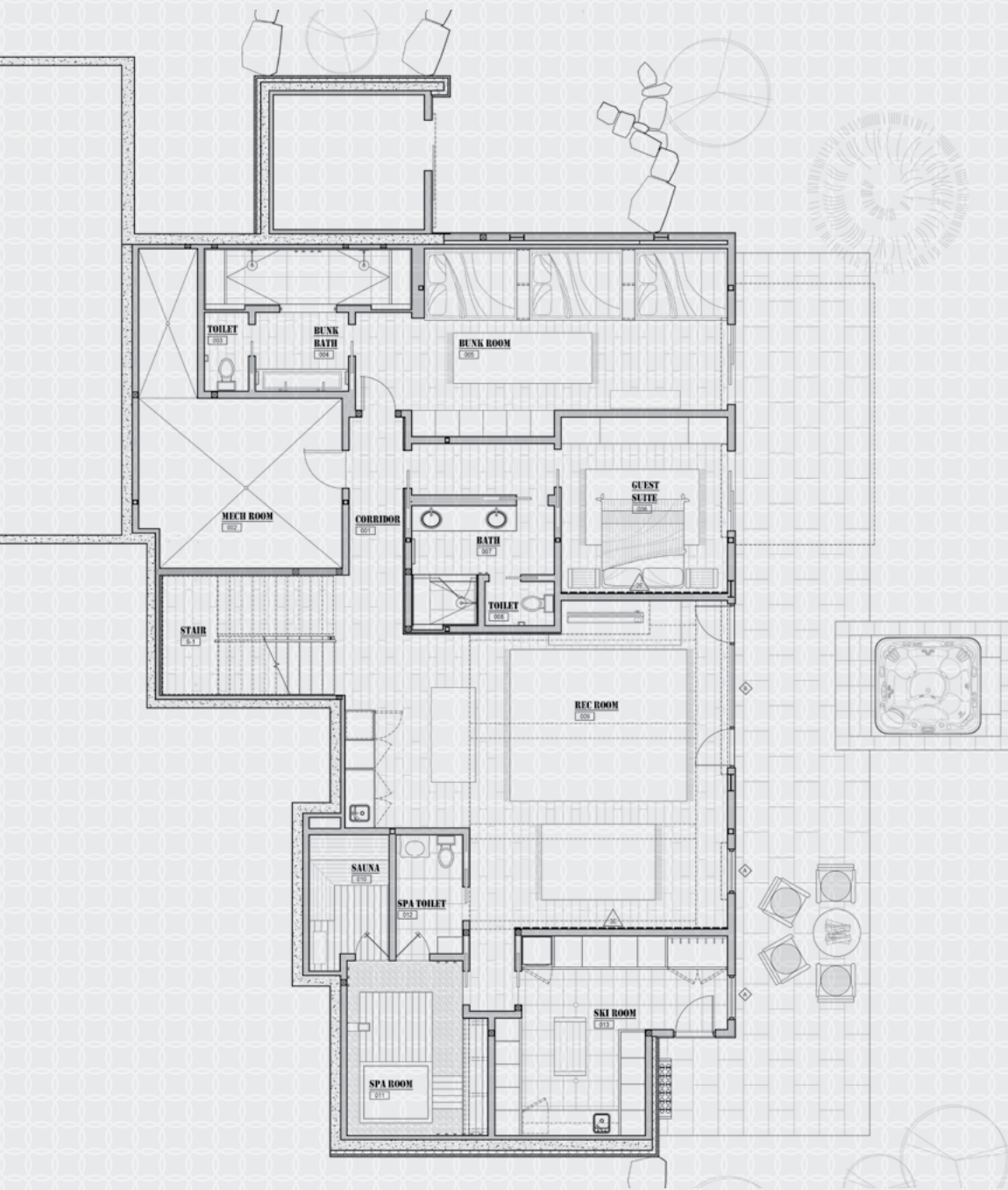
- AMERICAN SPIRIT 820 -

6,806 HEATED LIVABLE SQUARE FOOTAGE



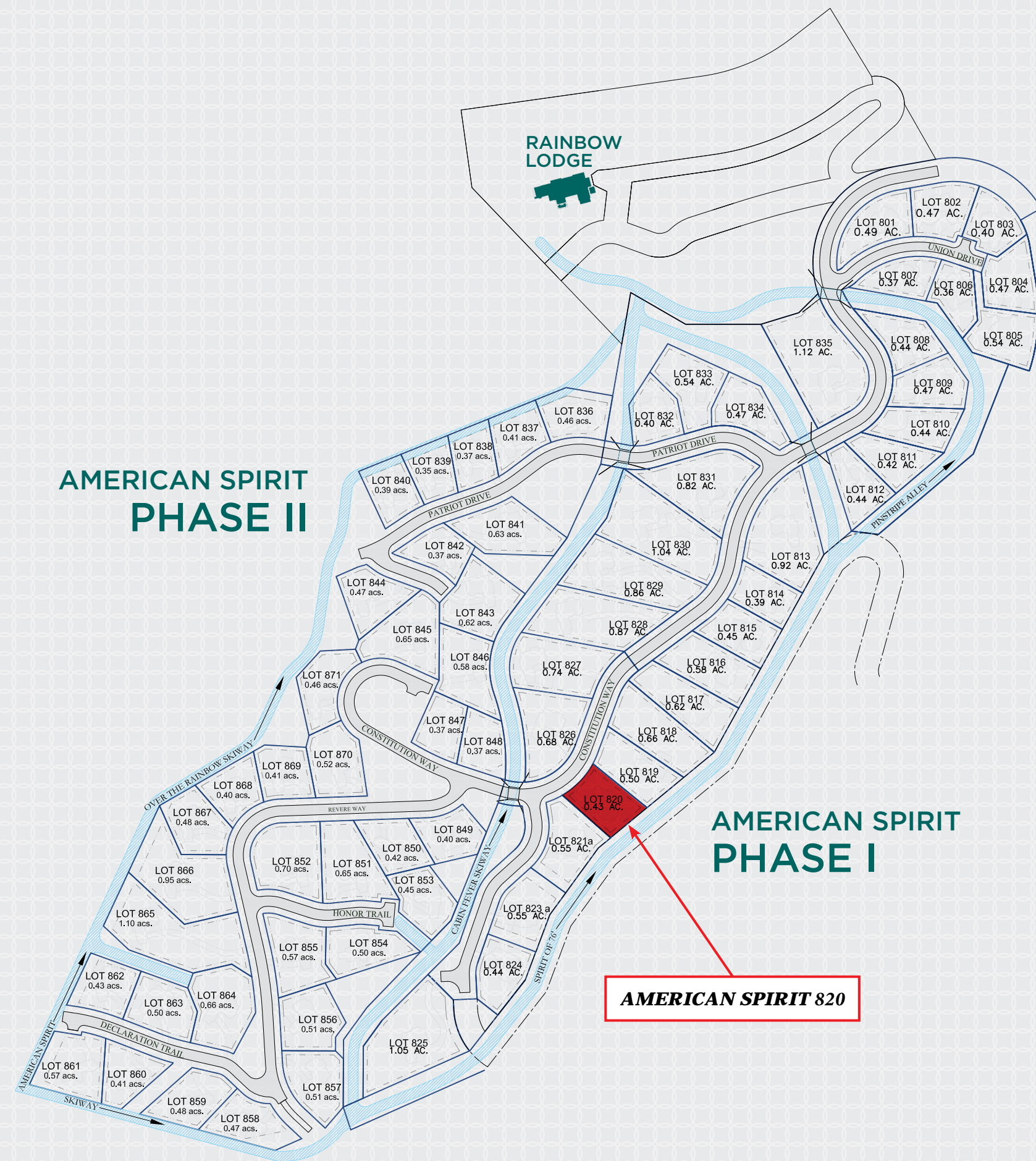
UPPER LEVEL

Master Suite / Master Bathroom



LOWER LEVEL

Guest Suite / Guest Bathroom
Bunk Room / Bunk Bathroom
Recreation Room / Spa Room / Spa Bathroom
Sauna / Ski Room / Hot Tub / Ski Access



Master Suite



Master Bathroom and Walk-In Closet



Master Shower



Spa and Cool Down Tub



Sauna, Spa Room and Spa Bathroom





Recreation Room



Guest Suite



Bunk Room



YELLOWSTONE CLUB

For more information about this property and its pricing please contact YC Realty.
(888) 700-7748 | (406) 995-4900 | ycsales@yellowstoneclub.com | P.O. Box 161097 | Big Sky, Montana 59716
www.yellowstoneclub.com

All information deemed reliable, but not guaranteed. All acreages and square footages are estimates. The purchase of a home or homesite does not include membership in Yellowstone Club, or any right to use the private club facilities. Ownership of a home/homesite includes an obligation to pay assessments to a property owner's association. Please ask a sales associate for details. Photographs are representational of the approximate view corridors from the home. Livable square footages listed in this marketing piece are based upon the calculation of only the heated and livable areas within the exterior walls of the property and said square footages are deemed reliable, but not guaranteed. All acreages and square footages are estimates and are provided by the Seller or his designated representative; these measurements should not be a substitute for one's own evaluation and investigation. Ski accessibility is a relative term and can have different implications and meanings depending on the individual. One should investigate fully the property as it relates to its potential ski access and determine for themselves the degree of ski access the property might have or be developed. Buyer acknowledges and agrees that neither the Seller, the Broker, the Sales Associate nor any other real estate representative of the Yellowstone Club or its related affiliates have made any warranties or representations upon which Buyer has relied concerning the ski-in ski-out accessibility of the property. The determination of the level of ski access that a property might have will be the Buyers sole determination.

1/17

