

# - AMERICAN SPIRIT 853 -

## 7 HONOR TRAIL



The American Spirit neighborhood's mid-mountain location at Yellowstone Club means that every homesite there includes a carefully selected building envelope that maximizes ski access, ideally situates owners in one of the most walkable neighborhoods at the Club, ensures close proximity to Rainbow Lodge, and provides a well-balanced mix of mature vegetation and spectacular views. Homesite 853 will provide the foundation for an American Spirit home that will include and have access to everything the neighborhood has to offer. This .45 acre lot offers a 14,432 sq. ft. building envelope and situates owners for beautiful views of Lone Peak, Pioneer Mountain, and the Spanish Peaks. The Cabin Fever ski run provides quick access to YC's American Spirit lift so that only mere moments stand between skiers strapping on their boots and hitting the slopes.



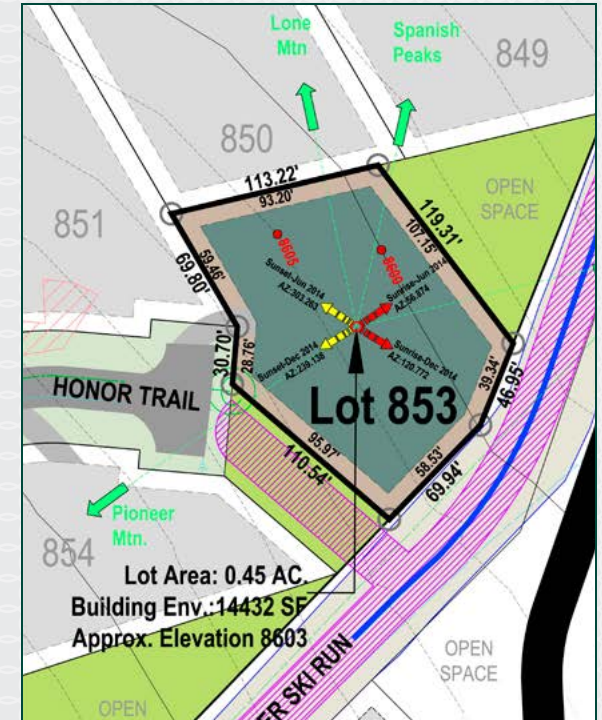
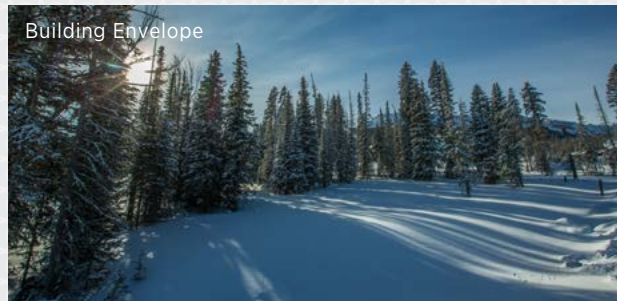
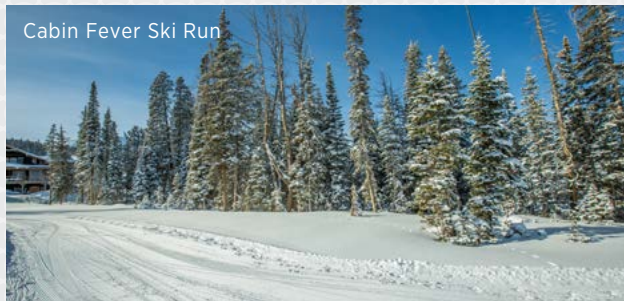
YELLOWSTONE CLUB

# - AMERICAN SPIRIT 853 -

## 7 HONOR TRAIL

### FEATURES

- .45 acre lot
- Building envelope: 14,432 square feet
- Gently sloped lot with mature vegetation
- Views of Pioneer Mountain, Lone Peak, and the Spanish Peaks
- Ski in/ski out access via Cabin Fever ski run/ American Spirit lift
- Short drive to Rainbow Lodge



*This homesite is located within Yellowstone Club, a 13,600 acre private, gated community located in Big Sky, Montana. Yellowstone Club is the world's only private ski and golf community, with thousands of acres of private skiing together with a championship golf course designed by Tom Weiskopf. Additionally, there are fishing streams, hiking and biking trails and horseback riding. Personal attention assures an excellent children's program as well as high-quality amenities which round out the unique Montana experience that is Yellowstone Club.*

For more information about this property and its pricing, please contact your YC Realty Sales Associate.  
 (888) 700-7748 | (406) 995-4900 | ycsales@yellowstoneclub.com | P.O. Box 161097 | Big Sky, Montana 59716  
[www.yellowstoneclub.com](http://www.yellowstoneclub.com)

All information deemed reliable, but not guaranteed. All acreages are estimates. The purchase of a homesite does not include membership in Yellowstone Club, or any right to use the private club facilities. Ownership of a homesite includes an obligation to pay assessments to a property owner's association. Please ask a sales associate for details. Photographs are representational of the approximate view corridors from the homesite. All acreages and square footages are estimates meanings depending on the individual. One should investigate fully the property as it relates to its potential ski access and determine for themselves the degree of ski access the property might have or be developed. Buyer acknowledges and agrees that neither the Seller, the Broker, the Sales Associate nor any other real estate representative of the Yellowstone Club or its related affiliates have made any warranties or representations upon which Buyer has relied concerning the ski-in ski-out accessibility of the property. The determination of the level of ski access that a property might have will be the Buyers sole determination.