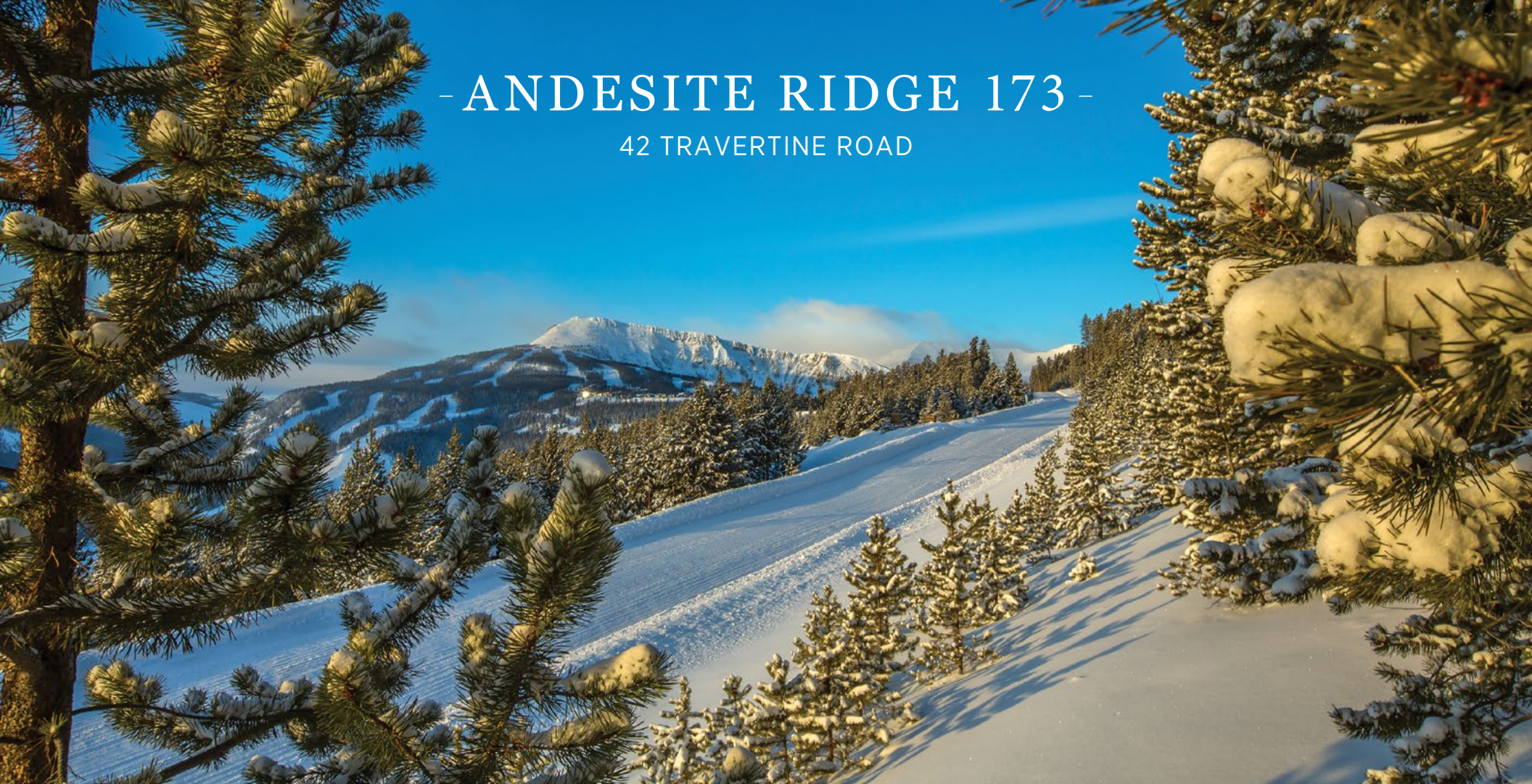


# - ANDESITE RIDGE 173 -

42 TRAVERTINE ROAD



Ideally situated in Yellowstone Club's original neighborhood, Andesite Ridge 173, with its sweeping views of the Gallatin Range, Eglise Mountain, and Pioneer Mountain, sets the stage for a sublime mountain living experience. This 2.81-acre lot has a nearly 40,000 square foot building envelope - ample space that will give owners the opportunity to build the alpine abode of their dreams. Southern and southwestern exposure ensure constant, clear light, which is never more apparent than during the spectacular Montana sunrises that greet this homesite every morning. Andesite Ridge 173, with its stunning views and close proximity to Yellowstone Club's more than 2,200 acres of skiable terrain, lays a beautiful foundation for family gatherings in Montana for generations to come.



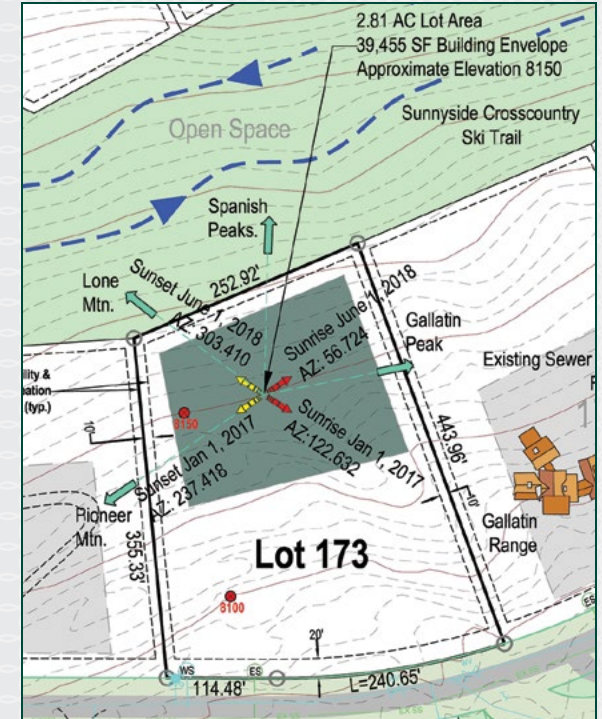
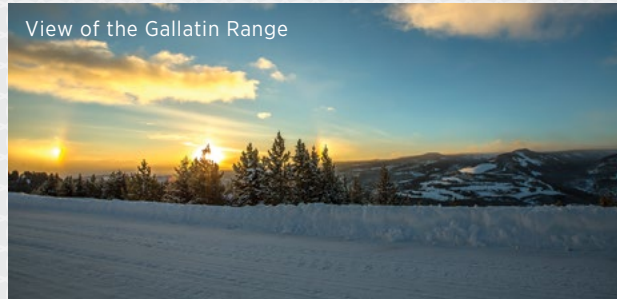
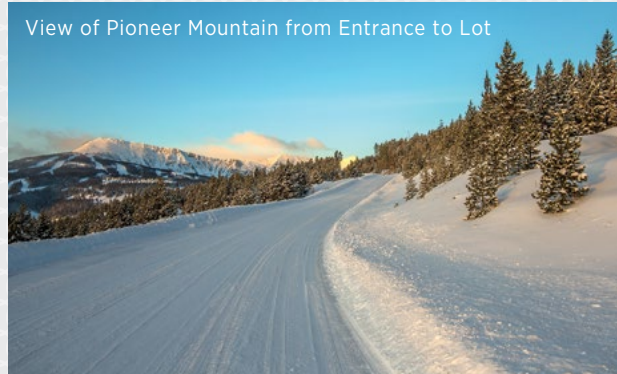
YELLOWSTONE CLUB

# - ANDESITE RIDGE 173 -

## 42 TRAVERTINE ROAD

### FEATURES

- Lot size: 2.81 acres
- Building Envelope: 39,455 square feet
- Expansive views of the Gallatin Range, Eglise Mountain, and Pioneer Mountain
- Southern and southwestern exposure ensure consistent light
- Easy access to YC's 2,200 acres of skiable terrain and base area amenities



*This homesite is located within Yellowstone Club, a 13,600 acre private, gated community located in Big Sky, Montana. Yellowstone Club is the world's only private ski and golf community, with thousands of acres of private skiing together with a championship golf course designed by Tom Weiskopf. Additionally, there are fishing streams, hiking and biking trails and horseback riding. Personal attention assures an excellent children's program as well as high-quality amenities which round out the unique Montana experience that is Yellowstone Club.*

For more information about this property and its pricing, please contact your YC Realty Sales Associate.  
 (888) 700-7748 | (406) 995-4900 | ycsales@yellowstoneclub.com | P.O. Box 161097 | Big Sky, Montana 59716  
[www.yellowstoneclub.com](http://www.yellowstoneclub.com)

All information deemed reliable, but not guaranteed. All acreages are estimates. The purchase of a homesite does not include membership in Yellowstone Club, or any right to use the private club facilities. Ownership of a homesite includes an obligation to pay assessments to a property owner's association. Please ask a sales associate for details. Photographs are representational of the approximate view corridors from the homesite. All acreages and square footages are estimates meanings depending on the individual. One should investigate fully the property as it relates to its potential ski access and determine for themselves the degree of ski access the property might have or be developed. Buyer acknowledges and agrees that neither the Seller, the Broker, the Sales Associate nor any other real estate representative of the Yellowstone Club or its related affiliates have made any warranties or representations upon which Buyer has relied concerning the ski-in ski-out accessibility of the property. The determination of the level of ski access that a property might have will be the Buyers sole determination.