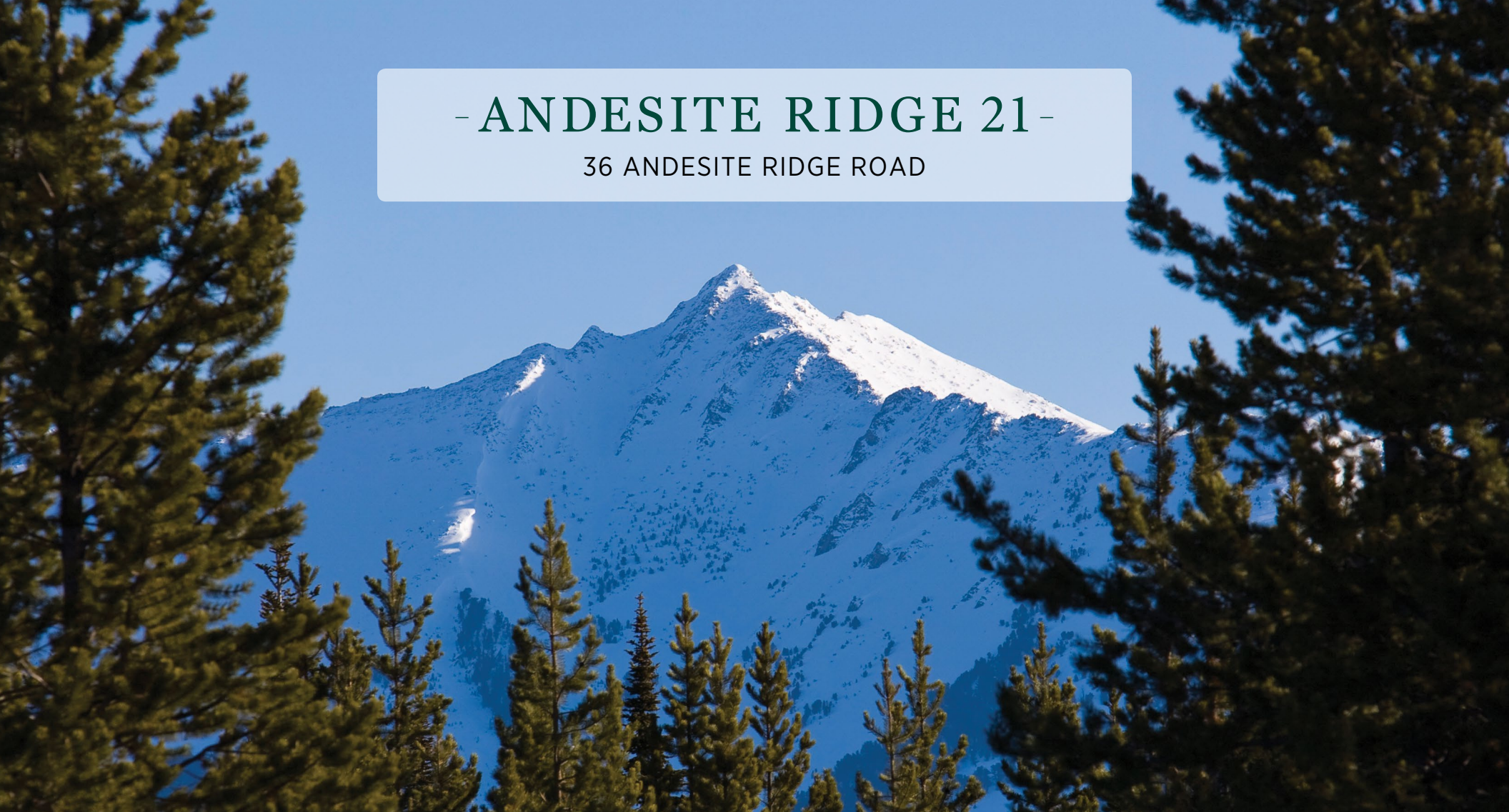


- ANDESITE RIDGE 21 -

36 ANDESITE RIDGE ROAD



Andesite Ridge 21, with sweeping views of Eglise Mountain and the Spanish Peaks, provides an idyllic alpine backdrop for a beautiful Montana home. Its stunning views and close proximity to Yellowstone Club's more than 2,200 acres of skiable terrain make this lot the ideal location for a ski- and outdoors-loving family, while its spacious building envelope means any home built on it will provide plentiful room for friend and family gatherings in a private but welcoming setting.



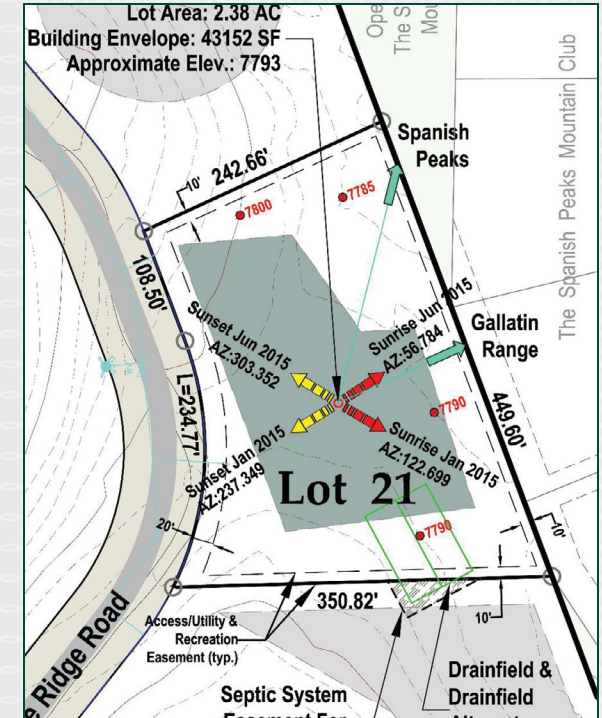
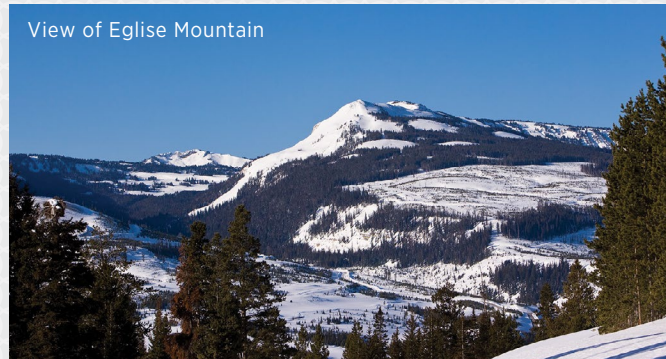
YELLOWSTONE CLUB

- ANDESITE RIDGE 21 -

36 ANDESITE RIDGE ROAD

FEATURES

- 2.38 acres
- Level building envelope
- Bordered by views of the Spanish Peaks and Eglise Mountain
- Convenient access to base area and all YC amenities



This homesite is located within Yellowstone Club, a 13,600 acre private, gated community located in Big Sky, Montana. Yellowstone Club is the world's only private ski and golf community, with thousands of acres of private skiing together with a championship golf course designed by Tom Weiskopf. Additionally, there are fishing streams, hiking and biking trails and horseback riding. Personal attention assures an excellent children's program as well as high-quality amenities which round out the unique Montana experience that is Yellowstone Club.

For more information about this property and its pricing, please contact your YC Realty Sales Associate.
 (888) 700-7748 | (406) 995-4900 | ycsales@yellowstoneclub.com | P.O. Box 161097 | Big Sky, Montana 59716
www.yellowstoneclub.com

All information deemed reliable, but not guaranteed. All acreages are estimates. The purchase of a homesite does not include membership in Yellowstone Club, or any right to use the private club facilities. Ownership of a homesite includes an obligation to pay assessments to a property owner's association. Please ask a sales associate for details. Photographs are representational of the approximate view corridors from the homesite. All acreages and square footages are estimates meanings depending on the individual. One should investigate fully the property as it relates to its potential ski access and determine for themselves the degree of ski access the property might have or be developed. Buyer acknowledges and agrees that neither the Seller, the Broker, the Sales Associate nor any other real estate representative of the Yellowstone Club or its related affiliates have made any warranties or representations upon which Buyer has relied concerning the ski-in ski-out accessibility of the property. The determination of the level of ski access that a property might have will be the Buyers sole determination.