

# - SLOPESIDE 512 -

15 AMERICAN SPIRIT ROAD



YELLOWSTONE CLUB



Slopeside Deck and Patio



Covered Deck



Lower Family Room

## – SLOPESIDE 512 –

15 AMERICAN SPIRIT ROAD

What skier doesn't dream of owning a Slopeside residence? To wake in the morning after a fresh snowfall, pull on winter gear, open the back door, and go? Every skier's dream becomes reality at Slopeside 512. The Slopeside neighborhood is about as close to the ski hill as a home can get; all of Pioneer Mountain and vast expanses of Private Powder® are mere footsteps away. This home is more than just its proximity to some of the best snow in the West; it's also surrounded by grand views of Pioneer Mountain and the Gallatin Range, and its location next to Warren Miller Lodge makes it adjacent to some of the finest amenities of any private club in the world.

Of course, setting is paramount at Yellowstone Club. Each home's refined architecture reflects unparalleled mountain living in which sunlight on south-facing peaks augments daily life. With its generous use of natural materials like hand-stacked stone and massive wooden beams, Slopeside 512 embodies timeless beauty and exceptional craftsmanship.

Slopeside 512 comprises one half of a thoughtfully designed duplex, and guests and owners will appreciate the abundance of space in which living quarters spread over three levels create room for large family gatherings and getaways. The home's main level features an incredible kitchen space, complete with a cabinet-fronted refrigerator, elegant farmhouse sink, and high-end appliances. The kitchen opens up to the home's dining room and great room, whose doors open to reveal the well-appointed outdoor cooking and entertaining space. The main level also includes two bedroom suites, a powder room, and a stylish main entry. The lower level features an abundance of amenities, including a hidden wine cellar, a two-car garage, a ski room, and a bunk room. Upstairs, two master suites provide luxurious and intimate sanctuaries. Overall, Slopeside 512 features an impressive 7,430 heated livable square feet. Add to this the carefully crafted outdoor spaces including the hot tub and outdoor fireplaces, as well as the immense natural backyard of Yellowstone Club, and one realizes that Slopeside 512 is no dream – it's the best that reality can offer.



Kitchen

## - SLOPESIDE 512 -

15 AMERICAN SPIRIT ROAD

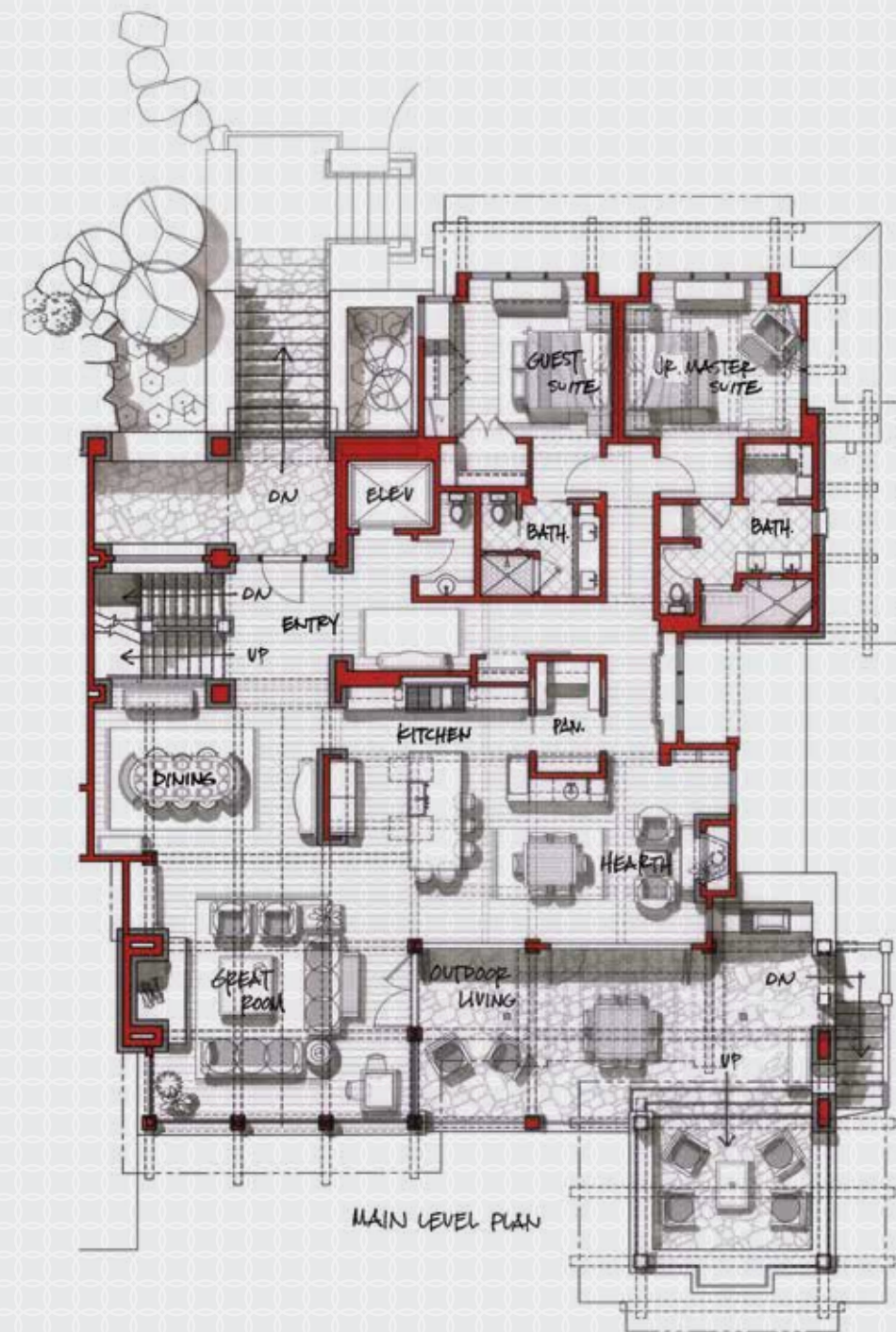
### FEATURES

- 7,430 heated livable square feet
- Lower level with family room, ski room, wine cellar, bunk room, spa, and rec room
- Main level with two guest suites, kitchen, great room, and outdoor living space
- Upper level with master suite and junior master suite
- Elevator connects all three levels
- Custom sliding barn doors in the bunkroom
- Multiple and spacious outdoor living areas; slopeside hot tub
- Incredible access to Pioneer Mountain via the Lodge Lift
- Short walk from Warren Miller Lodge and all Club amenities

This residence is located within Yellowstone Club, a 13,600 acre private, gated community located in Big Sky, Montana. Yellowstone Club is the world's only private ski and golf community, encompassing thousands of acres of private skiing along with a championship golf course designed by Tom Weiskopf. Additionally, whether looking to savor spectacular mountain panoramas, explore the vast wilderness or enjoy high-quality amenities, Yellowstone Club offers everything from fly fishing, hiking and biking trails to fine dining and spa services. Professional SnowSports, golf and outdoor recreation programs, along with dedicated children's activities, round out the unique Montana experience that is Yellowstone Club.

- SLOPESIDE 512 -

7,430 HEATED LIVABLE SQUARE FOOTAGE

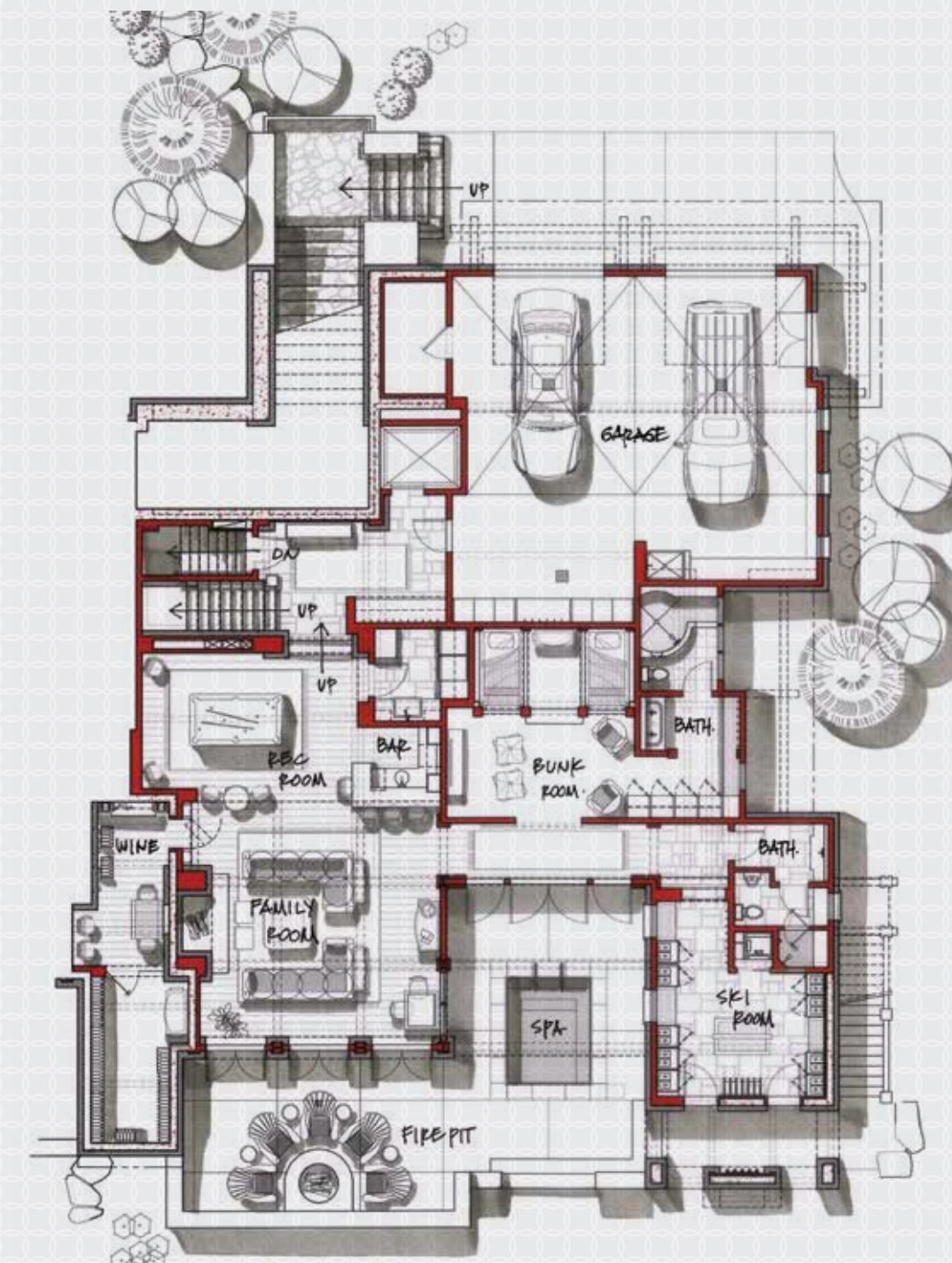


MAIN LEVEL

Great Room / Kitchen / Dining Room / Hearth Room  
Powder Room / Elevator  
Jr Master Suite / Jr Master Bathroom / Guest Suite / Guest Bathroom

- SLOPESIDE 512 -

7,430 HEATED LIVABLE SQUARE FOOTAGE

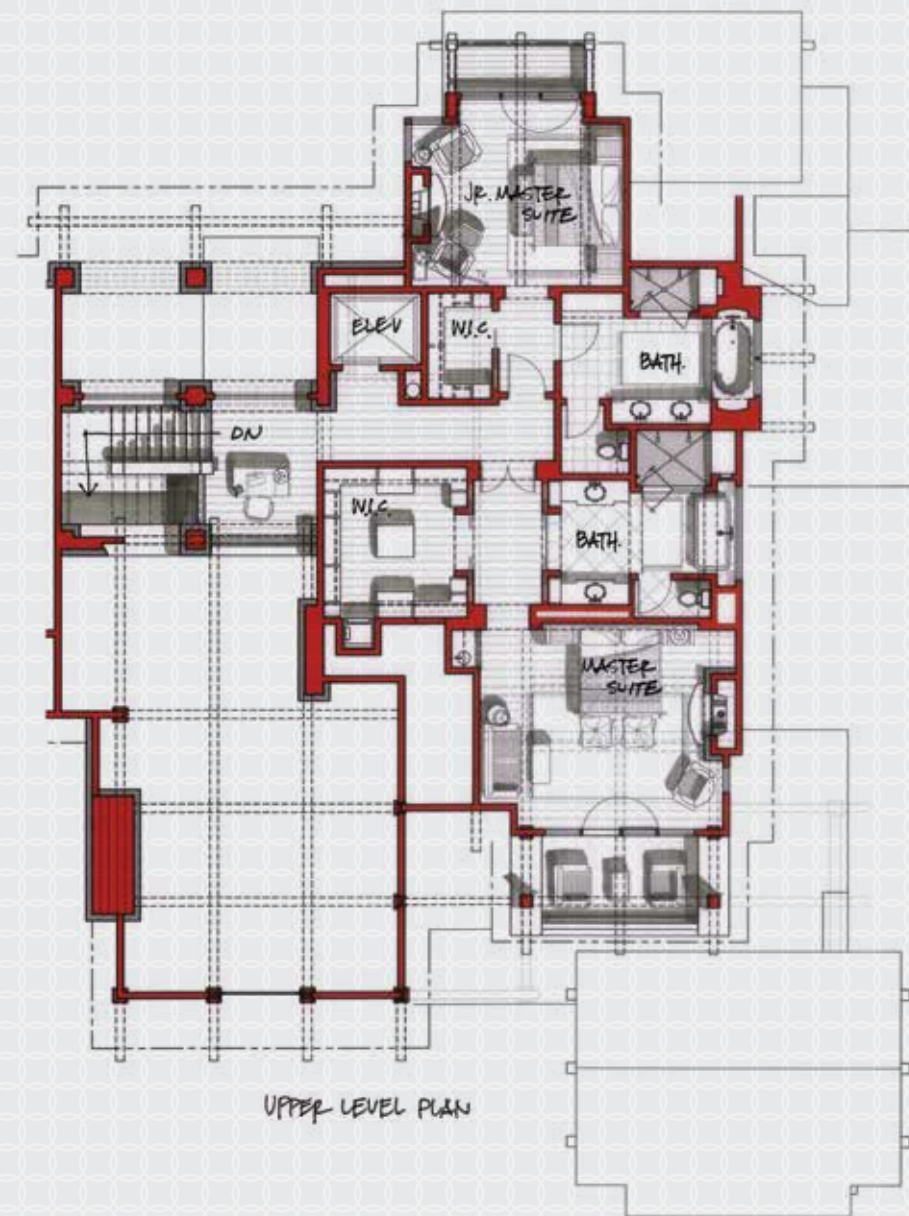


LOWER LEVEL

Family Room / Bar / Recreation Room / Wine Room  
Powder Room / Bunk Room / Bunk Bathroom / Laundry Room  
2-Car Garage / Hot Tub / Ski Room / Ski Access

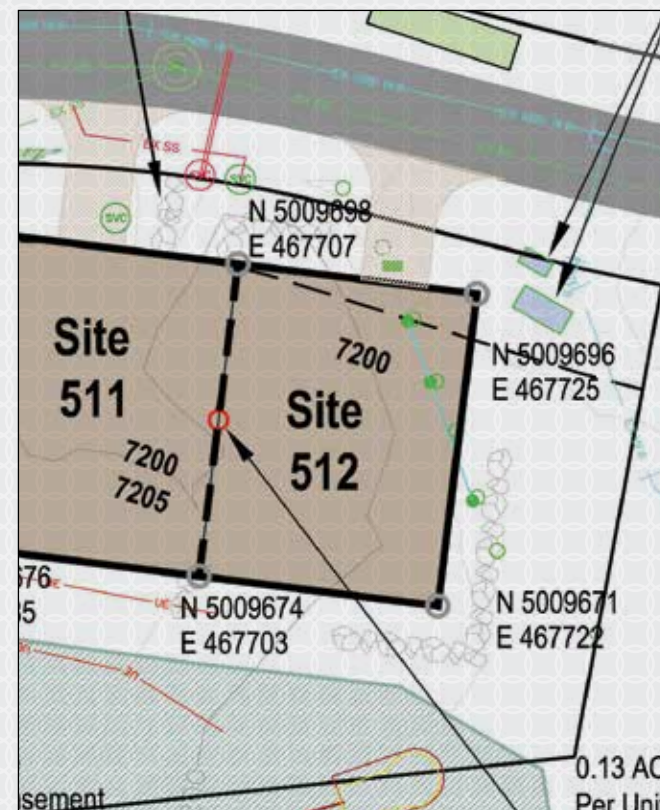
- SLOPESIDE 512 -

7,430 HEATED LIVABLE SQUARE FOOTAGE



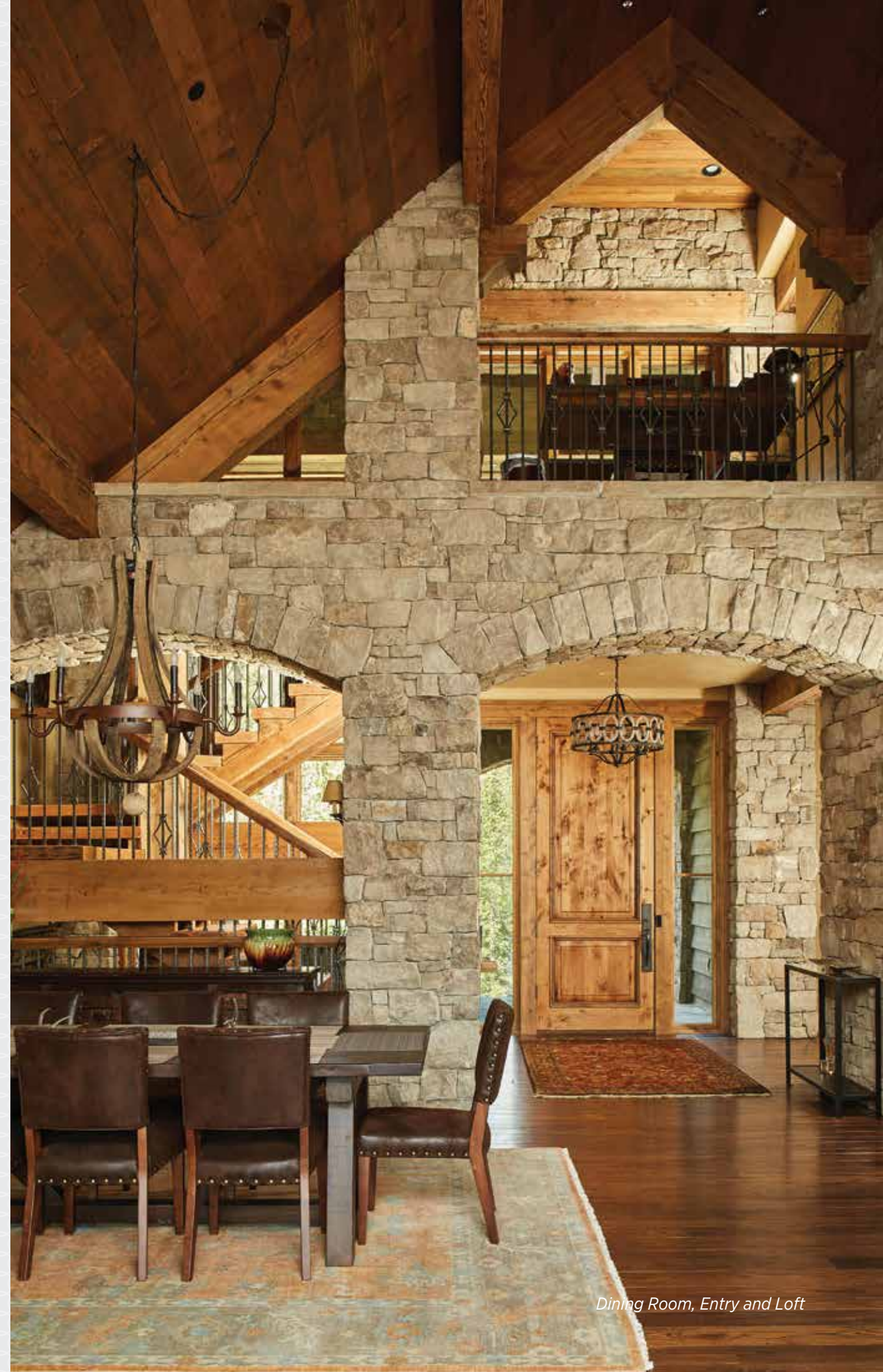
UPPER LEVEL

Master Suite / Master Bathroom  
Jr Master Suite / Jr Master Bathroom





*Residence Entry into Great Room*



*Dining Room, Entry and Loft*



Family Recreation Room



Slopeside Deck with Fire Pit and Hot Tub



Master Suite



Master Bathroom



Junior Master Suite



Stairway



Bunk Room



Bunk Room



Guest Suite



Covered Deck



Hot Tub with View of Ski Lifts



Exterior View



## YELLOWSTONE CLUB

For more information about this property and its pricing please contact YC Realty.

(888) 700-7748 | (406) 995-4900 | [ycsales@yellowstoneclub.com](mailto:ycsales@yellowstoneclub.com) | P.O. Box 161097 | Big Sky, Montana 59716

[www.yellowstoneclub.com](http://www.yellowstoneclub.com)

Photography by Ryan Day Thompson

All information deemed reliable, but not guaranteed. All acreages and square footages are estimates. The purchase of a home or homesite does not include membership in Yellowstone Club, or any right to use the private club facilities. Ownership of a home/homesite includes an obligation to pay assessments to a property owner's association. Please ask a sales associate for details. Photographs are representational of the approximate view corridors from the home. Livable square footages listed in this marketing piece are based upon the calculation of only the heated and livable areas within the exterior walls of the property and said square footages are deemed reliable, but not guaranteed. All acreages and square footages are estimates and are provided by the Seller or his designated representative; these measurements should not be a substitute for one's own evaluation and investigation. Ski accessibility is a relative term and can have different implications and meanings depending on the individual. One should investigate fully the property as it relates to its potential ski access and determine for themselves the degree of ski access the property might have or be developed. Buyer acknowledges and agrees that neither the Seller, the Broker, the Sales Associate nor any other real estate representative of the Yellowstone Club or its related affiliates have made any warranties or representations upon which Buyer has relied concerning the ski-in ski-out accessibility of the property. The determination of the level of ski access that a property might have will be the Buyers sole determination.