

- ALPINE GREENS 741 -

26 JACKRAIL LANE



Views of the Spanish Peaks

The location of Alpine Greens 741 – a spacious 1.03 acre lot on a quiet cul-de-sac at 26 Jackrail Lane – means that a future home will provide owners with a tangible sense of seclusion and privacy. Its central location, however, will also allow them quick access to Yellowstone Club’s Tom Weiskopf-designed golf course and its accompanying Clubhouse as well as to all base area amenities. Alpine Greens homeowners enjoy unique vistas of multiple mountain ranges, and the sun-soaked views from lot 741 are no exception. Members will bask in light-filled panoramas of Lone Peak, the Spanish Peaks, and the Gallatin Range throughout the day, while mature lodgepole pines surrounding the property lend a sense of quiet retreat to the lot. The only thing better than departing for a round of golf from Alpine Greens 741 will be returning home to it at the end of the day to enjoy breathtaking sunsets from the deck of your private mountain getaway.



Building Envelope

FEATURES

1.03 acres

Located on quiet cul-de-sac in YC’s
Alpine Greens neighborhood

Easy access to golf course, Clubhouse,
and all base area amenities

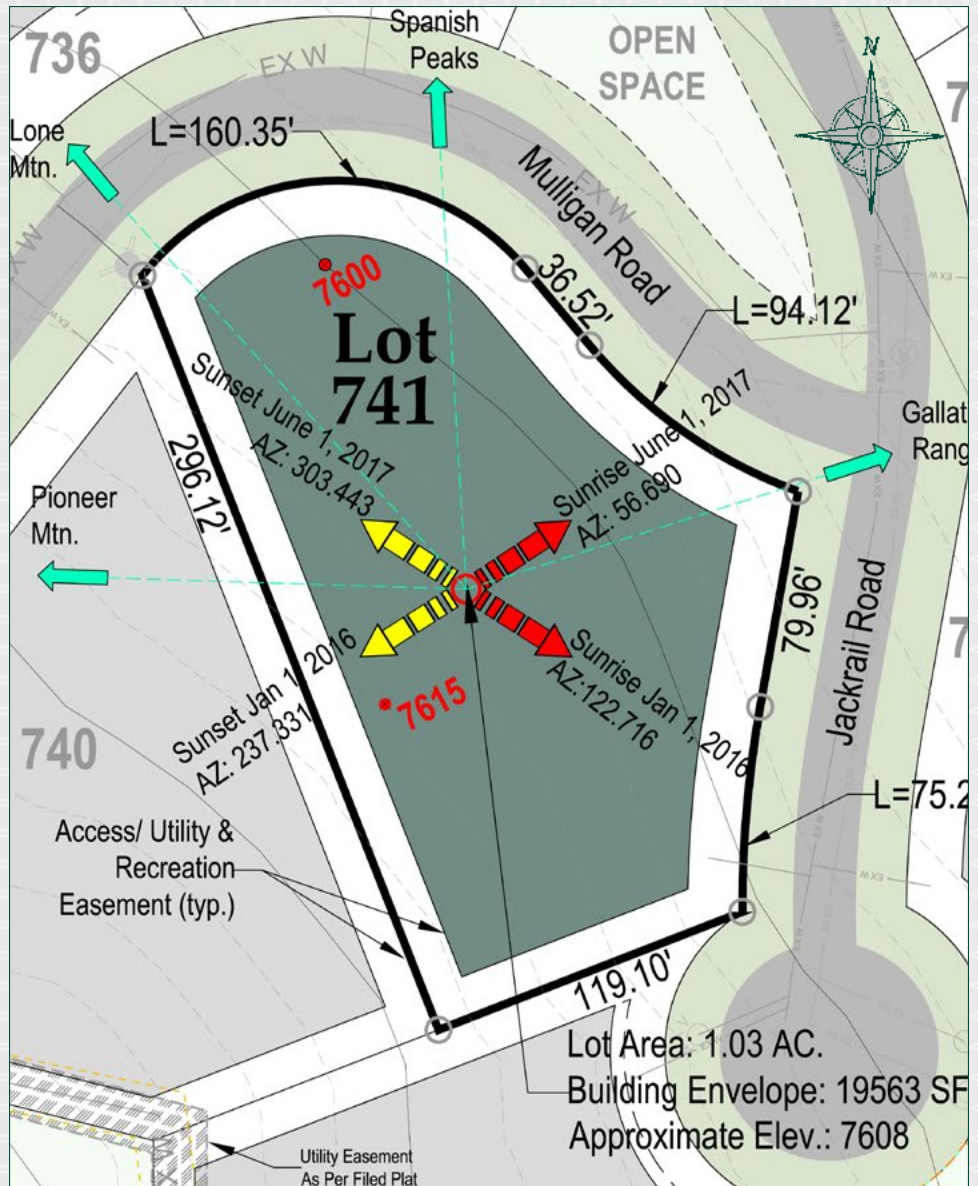
Views of Lone Peak, Spanish Peaks, and
the Gallatin Range

Mature lodgepole pines throughout
property



YELLOWSTONE CLUB

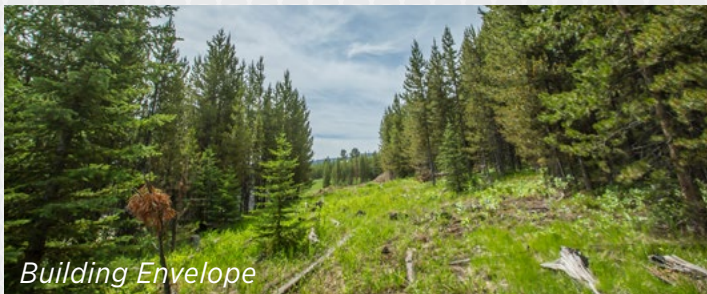
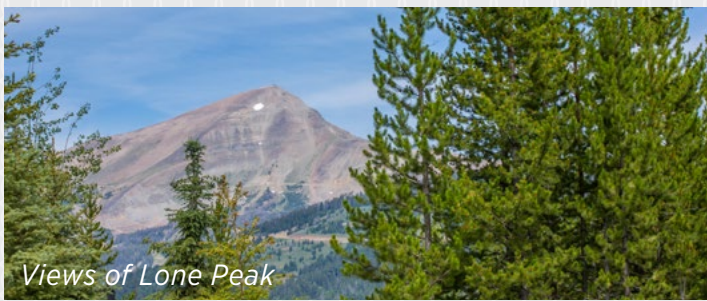
LEGEND



EASEMENTS

In addition to the easements shown, all lots are subject to the following access, utility, and recreations easements:

- 20' along lot lines fronting access easements unless noted
- 15' along side and rear lot lines unless noted



Directional view arrows and notations are approximate and are only to provide a general indication of the direction toward a view. Developer reserves the right to make changes without notice. This document is for schematic purposes only and is subject to change without notice. These materials and the features and amenities described herein are based upon current development plans, which are subject to change without notice. Obtain the property report required by applicable government authorities before signing anything. No governmental agency has judged the merits or value, if any, of this property. This material shall not constitute and offer to sell in any state where prior registration is required. The purchase of a home or homesite does not include membership in Yellowstone Club, or any right to use the private club facilities. Ownership of a home/homesite includes an obligation to pay assessments to a property owner's association. Photographs are representative of the approximate views from the community.

The Alpine Greens lots are adjacent to the Yellowstone Club golf course and are subject to the unintentional entry of golf balls on to these properties. One should investigate fully the property and its relationship to the golf course as it relates to potential golf ball intrusion and determine for themselves to the degree that errant golf balls might have on the property. Buyer acknowledges and agrees that neither the seller, the affiliates of the seller, YC Realty, LLC and its agents, nor any other representative of the Yellowstone Club or its related affiliates have made any warranties or representations upon which Buyer has relied concerning the issue of errant golf balls entering the property, this will be Buyer's sole determination. Buyers of Pioneer Point lots acknowledge and understand that living adjacent to a golf course brings with it certain particular activities and non-natural noise and smells to include, but not be limited to lawn mowers, gas powered carts, sprinkler systems, golfer's voices, use of fertilizer, use of treated water, grounds keeper activity at all times of the day, tournament play, music, etc.