

- BIG SKY RIDGE 423 -

36 FOXTAIL PINE ROAD



A home in Yellowstone Club's Big Sky Ridge neighborhood allows members premier access to YC's thousands of private skiable acres and guarantees spectacular mountain vistas in every direction. The 2.28 acre homesite located at Big Sky Ridge 423 epitomizes everything the neighborhood offers. Surrounded by magnificent views of Pioneer Mountain, Cedar Mountain, and Lone Peak, this ski accessible homesite ideally places members in the heart of a classic neighborhood at the Club while offering quiet alpine seclusion, privacy, beautiful panoramas, and easy access to skiing as well as base area amenities. For the family seeking unparalleled access to some the most pristine skiing in the heart of the Rocky Mountains, Big Sky Ridge 423 provides an ideal fit.



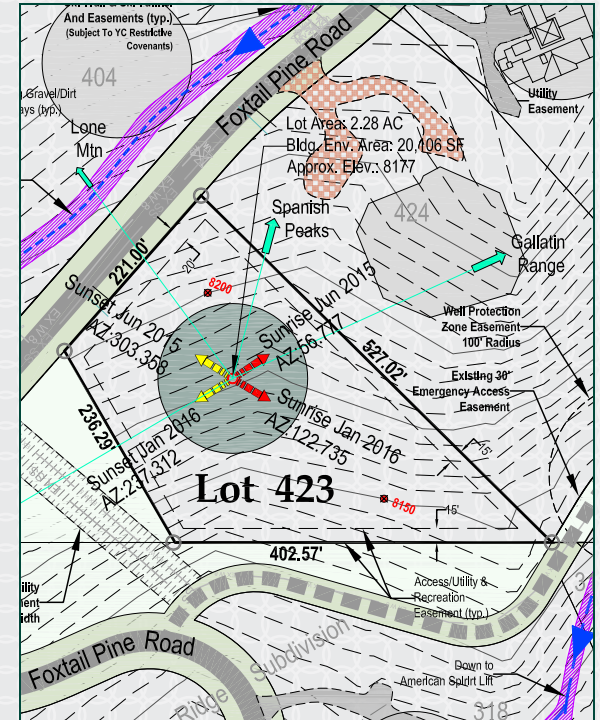
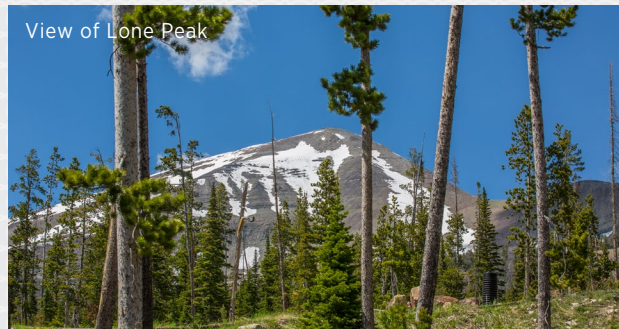
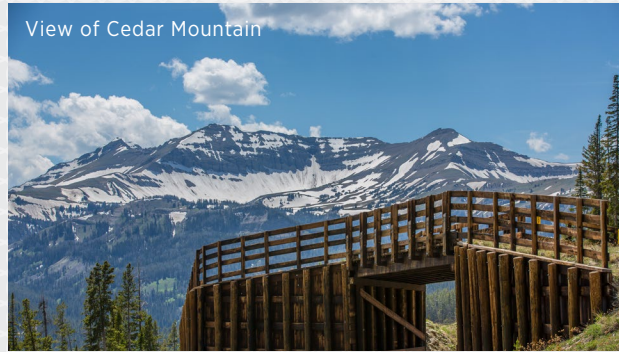
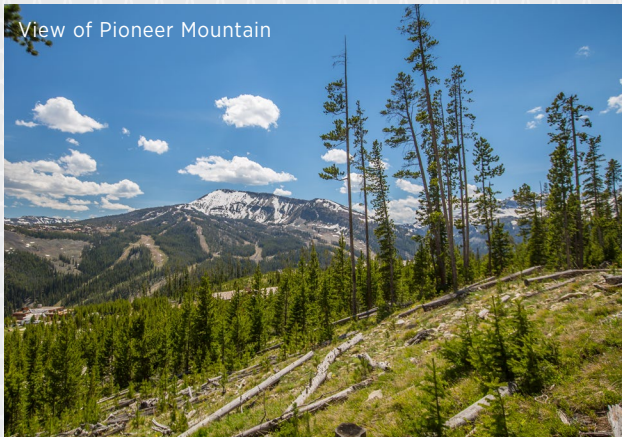
YELLOWSTONE CLUB

- BIG SKY RIDGE 423 -

36 FOXTAIL PINE ROAD

FEATURES

- 2.28 acres
- Excellent ski access
- Views of Pioneer Mountain, Cedar Mountain and Lone Peak



This homesite is located within Yellowstone Club, a 13,600 acre private, gated community located in Big Sky, Montana. Yellowstone Club is the world's only private ski and golf community, with thousands of acres of private skiing together with a championship golf course designed by Tom Weiskopf. Additionally, there are fishing streams, hiking and biking trails and horseback riding. Personal attention assures an excellent children's program as well as high-quality amenities which round out the unique Montana experience that is Yellowstone Club.

For more information about this property and its pricing, please contact your YC Realty Sales Associate.
(888) 700-7748 | (406) 995-4900 | ycsales@yellowstoneclub.com | P.O. Box 161097 | Big Sky, Montana 59716
www.yellowstoneclub.com

All information deemed reliable, but not guaranteed. All acreages are estimates. The purchase of a homesite does not include membership in Yellowstone Club, or any right to use the private club facilities. Ownership of a homesite includes an obligation to pay assessments to a property owner's association. Please ask a sales associate for details. Photographs are representational of the approximate view corridors from the homesite. All acreages and square footages are estimates meanings depending on the individual. One should investigate fully the property as it relates to its potential ski access and determine for themselves the degree of ski access the property might have or be developed. Buyer acknowledges and agrees that neither the Seller, the Broker, the Sales Associate nor any other real estate representative of the Yellowstone Club or its related affiliates have made any warranties or representations upon which Buyer has relied concerning the ski-in ski-out accessibility of the property. The determination of the level of ski access that a property might have will be the Buyers sole determination.