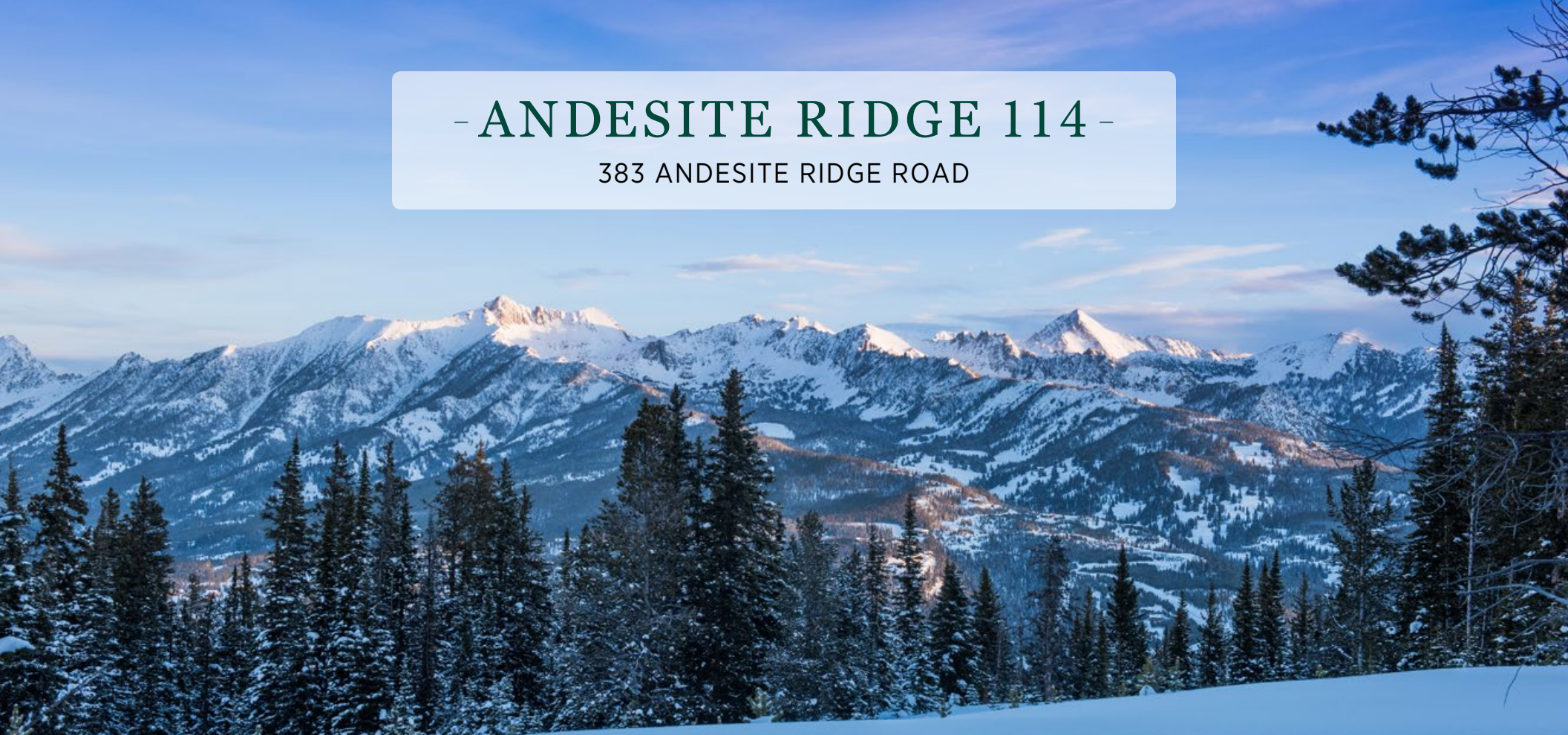


# - ANDESITE RIDGE 114 -

383 ANDESITE RIDGE ROAD



Andesite Ridge homes offer fantastic perches from which to soak up Yellowstone Club's iconic Rocky Mountain views at eye level and provide a true snow-filled wintertime experience complete with stunning sunsets. The area offers an ideal mix of quiet seclusion, easy access to base area amenities, and a well-established neighborhood feel.

The homesite at Andesite Ridge 114 is situated along Andesite Ridge Road, which accesses the top of the lot. The future home will sit near the road, where the land is gently-sloped and well-suited to construction. The land slopes away from the building envelope, revealing looming views of Pioneer Mountain to the west and the Gallatin Range to the east. Much of the lot features mature vegetation—including the classic Montana clusters of lodgepole pine—but thanks to the slope of the land, views are never obstructed. The owners of this homesite will appreciate the easy access to skiing via the Fandango Lift, the short drive to the base area, and the quiet feel of this corner of the Yellowstone Club.



YELLOWSTONE CLUB

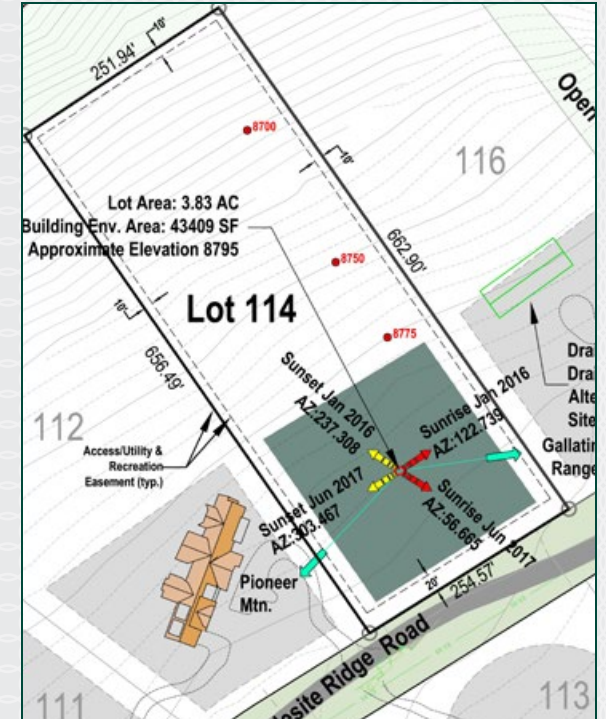
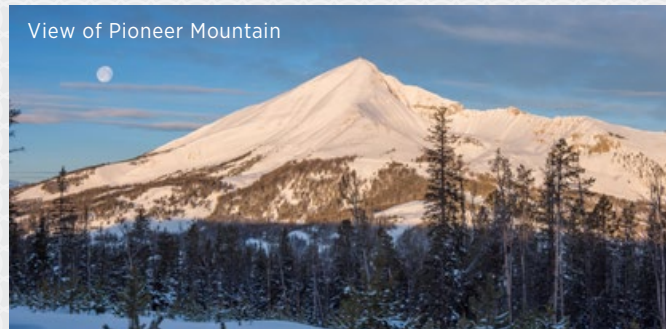
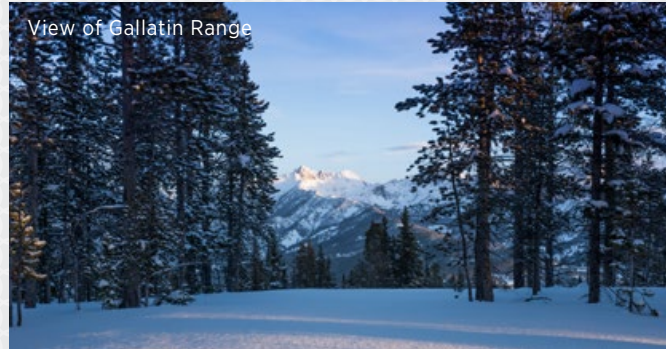


# - ANDESITE RIDGE 114 -

## 383 ANDESITE RIDGE ROAD

### FEATURES

- Lot size: 3.83 acres
- Building envelope: 43,409 square feet
- Approximate elevation: 8,795 feet
- Views of Pioneer Mountain and the Gallatin Range
- Ski access
- Building site features very gentle slope and mature vegetation



*This homesite is located within Yellowstone Club, a 13,600 acre private, gated community located in Big Sky, Montana. Yellowstone Club is the world's only private ski and golf community, with thousands of acres of private skiing together with a championship golf course designed by Tom Weiskopf. Additionally, there are fishing streams, hiking and biking trails and horseback riding. Personal attention assures an excellent children's program as well as high-quality amenities which round out the unique Montana experience that is Yellowstone Club.*

For more information about this property and its pricing, please contact your YC Realty Sales Associate.  
(888) 700-7748 | (406) 995-4900 | ycsales@yellowstoneclub.com | P.O. Box 161097 | Big Sky, Montana 59716  
[www.yellowstoneclub.com](http://www.yellowstoneclub.com)

All information deemed reliable, but not guaranteed. All acreages are estimates. The purchase of a homesite does not include membership in Yellowstone Club, or any right to use the private club facilities. Ownership of a homesite includes an obligation to pay assessments to a property owner's association. Please ask a sales associate for details. Photographs are representational of the approximate view corridors from the homesite. All acreages and square footages are estimates meanings depending on the individual. One should investigate fully the property as it relates to its potential ski access and determine for themselves the degree of ski access the property might have or be developed. Buyer acknowledges and agrees that neither the Seller, the Broker, the Sales Associate nor any other real estate representative of the Yellowstone Club or its related affiliates have made any warranties or representations upon which Buyer has relied concerning the ski-in ski-out accessibility of the property. The determination of the level of ski access that a property might have will be the Buyers sole determination.