

- ANDESITE RIDGE 132 -

10 SILVER SPUR ROAD

When you witness your first sweeping sunrise over the Gallatin Range, you realize your Montana dreams have become reality. The homesite at Andesite Ridge 132 features an incredible end-of-the-road feeling, where mountain views and open space mix to create an iconic Yellowstone Club experience.

Andesite Ridge 132 features a lot size of over two acres, allowing for construction of a spacious custom home while still maintaining abundant open space on the lot. This homesite is situated directly adjacent to the Fandango Lift, giving skiers true ski-in/ski-out access to all of the Club terrain. The homesite's building envelope is situated to maximize views of the Gallatin Range, while other mountains like Pioneer Mountain peek through the mature vegetation. These features create a sense of getaway and retreat, yet the base area amenities are but a short drive away.



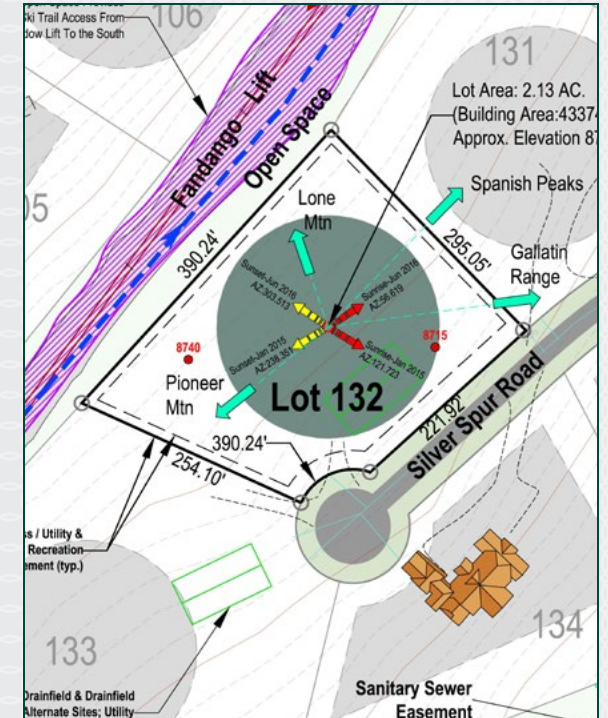
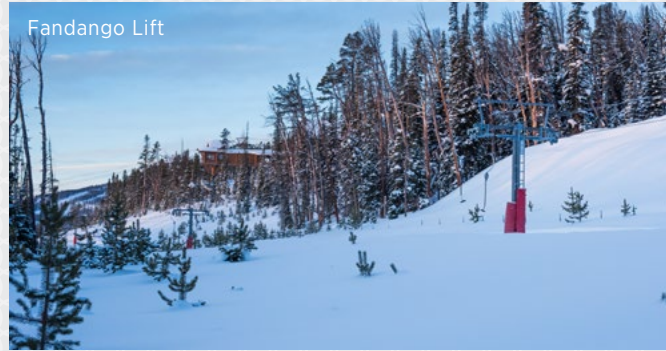
YELLOWSTONE CLUB

- ANDESITE RIDGE 132 -

10 SILVER SPUR ROAD

FEATURES

- Lot size: 2.13 acres
- Building envelope: 43,374 square feet
- Approximate elevation: 8,728 feet
- Located at the end of Silver Spur Road in Andesite Ridge neighborhood
- Views of Spanish Peaks, Pioneer Mountain, and the Gallatin Range
- Ski access



This homesite is located within Yellowstone Club, a 13,600 acre private, gated community located in Big Sky, Montana. Yellowstone Club is the world's only private ski and golf community, with thousands of acres of private skiing together with a championship golf course designed by Tom Weiskopf. Additionally, there are fishing streams, hiking and biking trails and horseback riding. Personal attention assures an excellent children's program as well as high-quality amenities which round out the unique Montana experience that is Yellowstone Club.

For more information about this property and its pricing, please contact your YC Realty Sales Associate.
(888) 700-7748 | (406) 995-4900 | ycsales@yellowstoneclub.com | P.O. Box 161097 | Big Sky, Montana 59716
www.yellowstoneclub.com

All information deemed reliable, but not guaranteed. All acreages are estimates. The purchase of a homesite does not include membership in Yellowstone Club, or any right to use the private club facilities. Ownership of a homesite includes an obligation to pay assessments to a property owner's association. Please ask a sales associate for details. Photographs are representational of the approximate view corridors from the homesite. All acreages and square footages are estimates meanings depending on the individual. One should investigate fully the property as it relates to its potential ski access and determine for themselves the degree of ski access the property might have or be developed. Buyer acknowledges and agrees that neither the Seller, the Broker, the Sales Associate nor any other real estate representative of the Yellowstone Club or its related affiliates have made any warranties or representations upon which Buyer has relied concerning the ski-in ski-out accessibility of the property. The determination of the level of ski access that a property might have will be the Buyers sole determination.