

BIG SKY RIDGE 405



YELLOWSTONE CLUB

BIG SKY RIDGE 405

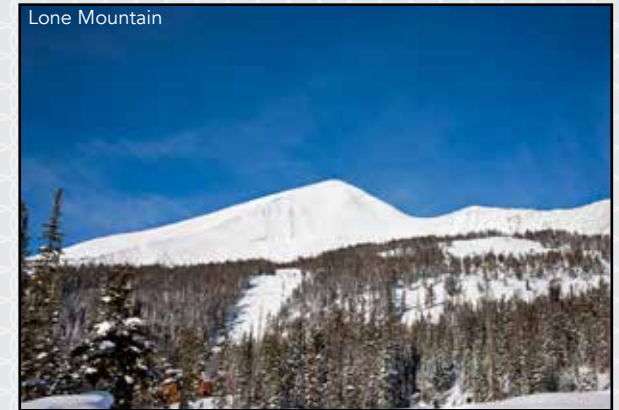
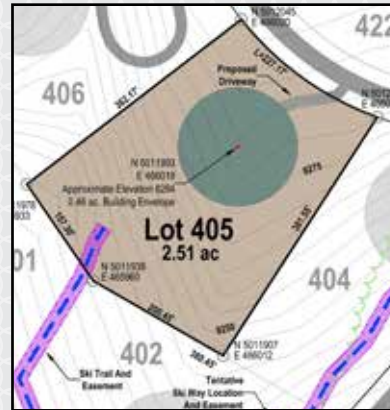
Andesite Rige 405 is located at 9 Big Dipper Way, Big Sky, Montana

The Big Sky Ridge neighborhood is ideal for skiers who can't seem to get enough of the pure Rocky Mountain powder. Big Sky Ridge 405, in the Big Sky Ridge neighborhood, offers Members unbeatable opportunities to experience not only our renowned Private Powder™, but it also provides fantastic ski-in access to Big Sky Resort. And with Big Sky's Biggest Skiing in America®, Members are able to ski thousands of acres of some of the finest skiing in the American West. Big Sky Ridge 405 sits adjacent to a ski trail, which makes the morning ski commute to Pioneer Mountain easy and enjoyable.

Big Sky Ridge 405 offers much more than just great access to skiing. This property sits at over 8,000 feet elevation—which means mountains are at eye level in every direction. This property is approximately 2.5 acres, with a large building envelope—perfect for a home meant to play and great for hosting family gatherings. The gentle slope of the land means that the trees on the property add privacy without blocking the view. This property is but a short drive from the base area of Yellowstone Club and the numerous amenities found at the Warren Miller Lodge.

Features

- Lot size: 2.51 acres
- Building envelope: 0.46 acre
- Approximate elevation: 8,284 feet
- Ski access to Pioneer Mountain and Big Sky Resort
- Views of Pioneer Mountain, Cedar Mountain and Lone Peak



This homesite is located within Yellowstone Club, a 13,600 acre private, gated community located in Big Sky, Montana. Yellowstone Club is the world's only private ski and golf community, with thousands of acres of private skiing together with a championship golf course designed by Tom Weiskopf. Additionally, there are fishing streams, hiking and biking trails and horseback riding. Personal attention assures an excellent children's program as well as high-quality amenities which round out the unique Montana experience that is Yellowstone Club.

For more information about this property and its pricing, please contact your YC Realty Sales Associate.
(888)700-7748 - (406)995-4900 - ycsales@yellowstoneclub.com - P.O. Box 161097 - Big Sky, Montana 59716
www.yellowstoneclub.com

All information deemed reliable, but not guaranteed. All acreages are estimates. The purchase of a homesite does not include membership in Yellowstone Club, or any right to use the private club facilities. Ownership of a homesite includes an obligation to pay assessments to a property owner's association. Please ask a sales associate for details. Photographs are representational of the approximate view corridors from the homesite. All acreages and square footages are estimates and are provided by the Seller or his designated representative; these measurements should not be a substitute for one's own evaluation and investigation. Ski accessibility is a relative term and can have different implications and meanings depending on the individual. One should investigate fully the property as it relates to its potential ski access and determine for themselves the degree of ski access the property might have or be developed. Buyer acknowledges and agrees that neither the Seller, the Broker, the Sales Associate nor any other real estate representative of the Yellowstone Club or its related affiliates have made any warranties or representations upon which Buyer has relied concerning the ski-in ski-out accessibility of the property. The determination of the level of ski access that a property might have will be the Buyers sole determination.