

# RESIDENCE 65



Custom Residence 65 located at 47 Fossil Road, Big Sky, MT

**YELLOWSTONE CLUB**





**RESIDENCE 65 HAS THE PERFECT  
OUTDOOR SETTING FOR ENTERTAINING**



# ➔ RESIDENCE 65 ➔

Custom Residence 65 located at 47 Fossil Road, Big Sky, MT

**I**nspired by French country mountain homes found in the Alps, this one-of-a-kind residence has been beautifully reborn here in the mountains of Montana. Sunlight bathes nearly every room from dawn until dusk through the home's expansive southern-facing windows where incredible views abound. The Sphinx and Eglise Mountain, Yellowstone Club's Tom Weiskopf designed golf course and Pioneer Mountain's Private Powder™ comprise the views from this unique custom residence. No detail has been left out in the design and construction of this home: a deluxe, private master suite, four guest suites, a fabulous home theatre, and separate exercise, recreation and powder rooms. Together with an open floorplan of over 6,700 livable square feet, luxurious furnishings, radiant in-floor heating for interiors as well as many exterior surfaces, and six beautiful and energy-efficient Rumsford-style fireplaces, this residence offers a strong sense of warmth and relaxation. Furthermore, the home boasts state-of-the-art 'smart home' capabilities, and two specialized air purification, humidification and heat recovery ventilation systems, which ensure a completely allergy-free atmosphere. This home is superb for entertaining with an intimate wine bar and cellar for the adults and an adventurous game room for the young at heart. The covered deck with fireplace, the hot tub built into a rustic rock foundation, or the gas fire pit off the flagstone patio- all are great choices for entertaining or relaxing beneath the stars and enjoying the views of the magnificent fountain, flowing into the unique, private pond. The home is nestled comfortably within a picturesque forest of lodgepole pines, which compliment the meticulously-designed log accents, stone construction, and copper-shed roofs.

## FEATURES

- Technologically-advanced 'smart home'
- Theatre with stadium seating and media control center
- Spacious family room with fireplace, TV/media center, and pool table
- Large children's activity room with in-floor radiant heat Wine cellar, wine tasting room with kitchenette State-of-the art air purification, humidification and heat recovery ventilation systems (two units) for constant allergy-free atmosphere
- Hot-tub built into rock foundation, radiant heat on its walkways, and gas fire pit off the large flagstone patio Great Room features timber trusses and an efficient, Rumsford-style fireplace
- Deluxe Master Suite, including a fireplace and a tumbled marble bath
- Separate exercise room/nursery and technology-friendly study
- Powder room features Rojo Alicante Marble
- Wet bar with Subzero wine refrigerator Mudroom with in-floor radiant heat, custom benches and lockers
- In-floor radiant heat for the garage, its access walkways, and the impressive entrance portico
- Covered deck with wood-burning fireplace

## FACTS & FIGURES

Size: 2.56 acres  
Square Footage:  
6,758 heated livable sq. ft.  
7,368 total sq. ft.  
Bedrooms: 5  
Bathrooms: 6  
Garage: 2 Car

## ARCHITECTS

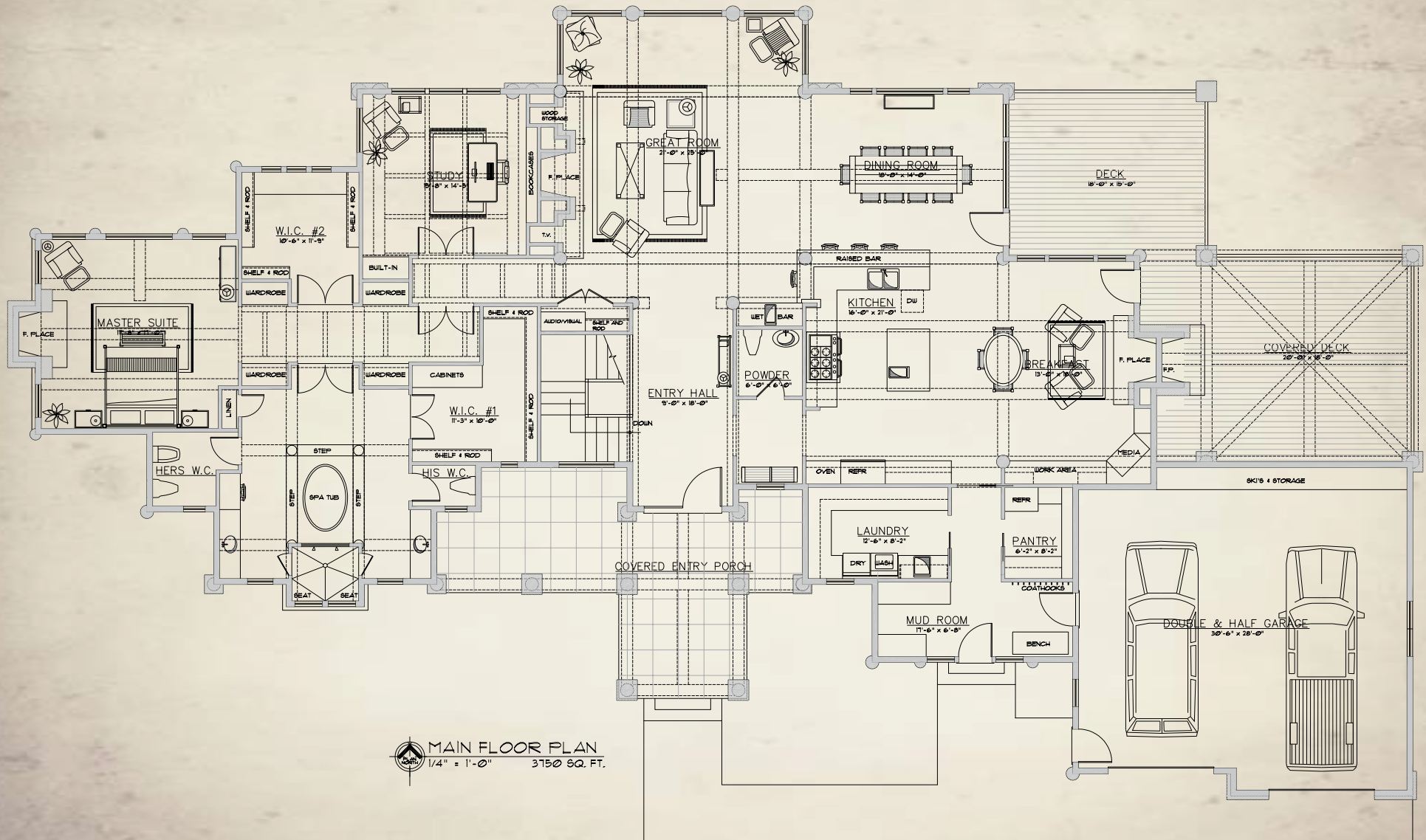
Reid Smith Architects  
17 West Olive  
Bozeman, MT 59715

## BUILDER

Bergerson Construction  
145 Mason Lane  
Hall, MT 59837

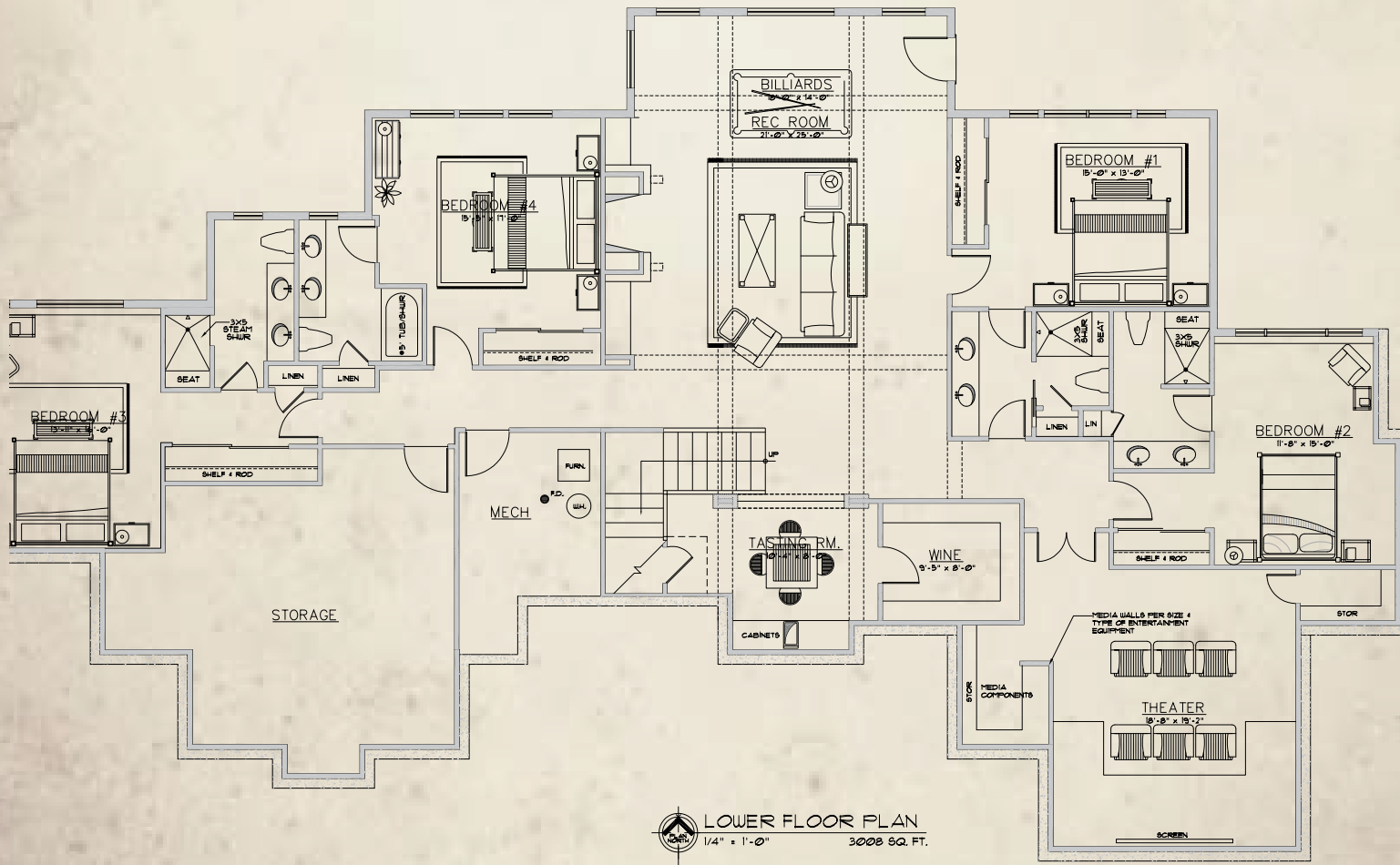
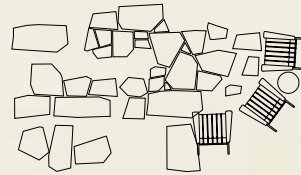
# ➤ MAIN LEVEL ➤

Liveable Area: 3,750 sq. ft.



# ➤ LOWER LEVEL ➤

Liveable Area: 3,008 sq. ft.







GREAT ROOM





**KITCHEN**



**DINING ROOM**



**FAMILY ROOM**



**THEATRE**



**MASTER BEDROOM**



**WINE BAR & CELLAR**



**MASTER BATHROOM**

This residence is located within Yellowstone Club, a 13,600 acre private, gated community located in Big Sky, Montana. Yellowstone Club is the world's only private ski and golf community, encompassing thousands of acres of private skiing along with a championship golf course designed by Tom Weiskopf.

Additionally, whether looking to savor spectacular mountain panoramas, explore the vast wilderness or enjoy high-quality amenities, Yellowstone Club offers everything from fly fishing, hiking and biking trails to fine dining and spa services. Professional SnowSports, golf and outdoor recreation programs, along with dedicated children's activities, round out the unique Montana experience that is Yellowstone Club.

## ➤ RESIDENCE 65 ➤

Custom Residence 65 located at 47 Fossil Road, Big Sky, MT



*Photography by Karl Neumann*



**YELLOWSTONE CLUB**

For more information about this property and its pricing please contact your YC Realty Sales Associate.

(888)700-7748 ^ (406) 995-4900 ^ [yccsales@yellowstoneclub.com](mailto:yccsales@yellowstoneclub.com) ^ P.O. Box 161097 ^ Big Sky, Montana 59716  
[www.yellowstoneclub.com](http://www.yellowstoneclub.com)

All information deemed reliable, but not guaranteed. All acreages and square footages are estimates. The purchase of a home or homesite does not include membership in Yellowstone Club, or any right to use the private club facilities. Ownership of a home/homesite includes an obligation to pay assessments to a property owner's association. Please ask a sales associate for details. Photographs are representational of the approximate view corridors from the home. Livable square footages listed in this marketing piece are based upon the calculation of only the heated and livable areas within the exterior walls of the property and said square footages are deemed reliable, but not guaranteed. All acreages and square footages are estimates and are provided by the Seller or his designated representative; these measurements should not be a substitute for one's own evaluation and investigation. Ski accessibility is a relative term and can have different implications and meanings depending on the individual. One should investigate fully the property as it relates to its potential ski access and determine for themselves the degree of ski access the property might have or be developed. Buyer acknowledges and agrees that neither the Seller, the Broker, the Sales Associate nor any other real estate representative of the Yellowstone Club or its related affiliates have made any warranties or representations upon which Buyer has relied concerning the ski-in ski-out accessibility of the property. The determination of the level of ski access that a property might have will be the Buyers sole determination.