

BIG SKY RIDGE 426



YELLOWSTONE CLUB

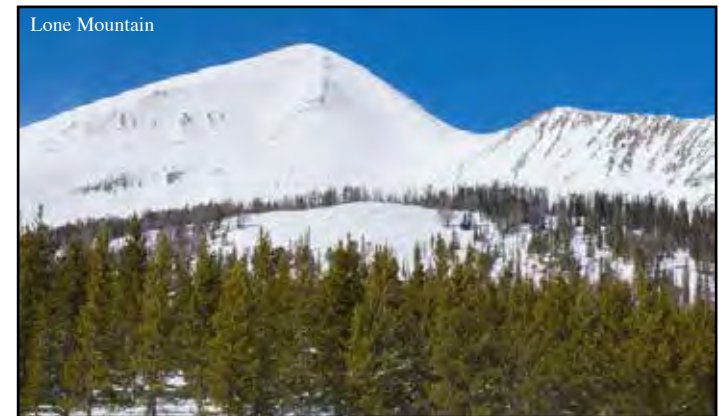
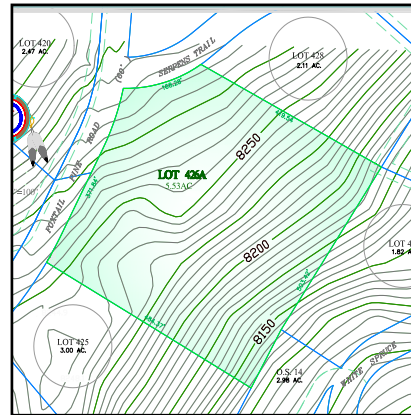
BIG SKY RIDGE 426

Big Sky Ridge 426 is located at 50 Foxtail Pine Road, Big Sky, Montana

The Big Sky Ridge neighborhood is known for many things: the privacy and solitude that comes from living high in the Rocky Mountains, awe-inspiring views, and amazing access to the world's best skiing via the ski trail on the eastern border of the property. Mature vegetation adds to the privacy of this lot, but does not obstruct the majestic mountain views, and with the gentle slope and spacious layout, Big Sky Ridge 426 creates an ideal location for your future mountain retreat. In addition, homeowners in the Big Sky Ridge community enjoy an easy approach to thousands of acres of skiing at Big Sky Resort. And with the fine dining, casual recreation, and gathering spaces of the Warren Miller Lodge just a short drive away, the owners of this homesite will truly delight in all the Club has to offer.

FEATURES

- 5.53 acres
- Immediate ski access from the eastern border of the property
- Beautiful views of Lone Peak, Pioneer and Cedar Mountains
- Mature lodge pole pines nestled throughout the property



This homesite is located within Yellowstone Club, a 13,600 acre private, gated community located in Big Sky, Montana. Yellowstone Club is the world's only private ski and golf community, with thousands of acres of private skiing together with a championship golf course designed by Tom Weiskopf. Additionally, there are fishing streams, hiking and biking trails and horseback riding. Personal attention assures an excellent children's program as well as high-quality amenities which round out the unique Montana experience that is Yellowstone Club.

For more information about this property and its pricing please contact your YC Realty Sales Associate.
(888)700-7748 - (406)995-4900 - ycsales@yellowstoneclub.com - P.O. Box 161097 - Big Sky, Montana 59716
www.yellowstoneclub.com

All information deemed reliable, but not guaranteed. All acreages are estimates. The purchase of a homesite does not include membership in Yellowstone Club, or any right to use the private club facilities. Ownership of a homesite includes an obligation to pay assessments to a property owner's association. Please ask a sales associate for details. Photographs are representational of the approximate view corridors from the homesite. All acreages and square footages are estimates and are provided by the Seller or his designated representative; these measurements should not be a substitute for one's own evaluation and investigation. Ski accessibility is a relative term and can have different implications and meanings depending on the individual. One should investigate fully the property as it relates to its potential ski access and determine for themselves the degree of ski access the property might have or be developed. Buyer acknowledges and agrees that neither the Seller, the Broker, the Sales Associate nor any other real estate representative of the Yellowstone Club or its related affiliates have made any warranties or representations upon which Buyer has relied concerning the ski-in ski-out accessibility of the property. The determination of the level of ski access that a property might have will be the Buyers sole determination.