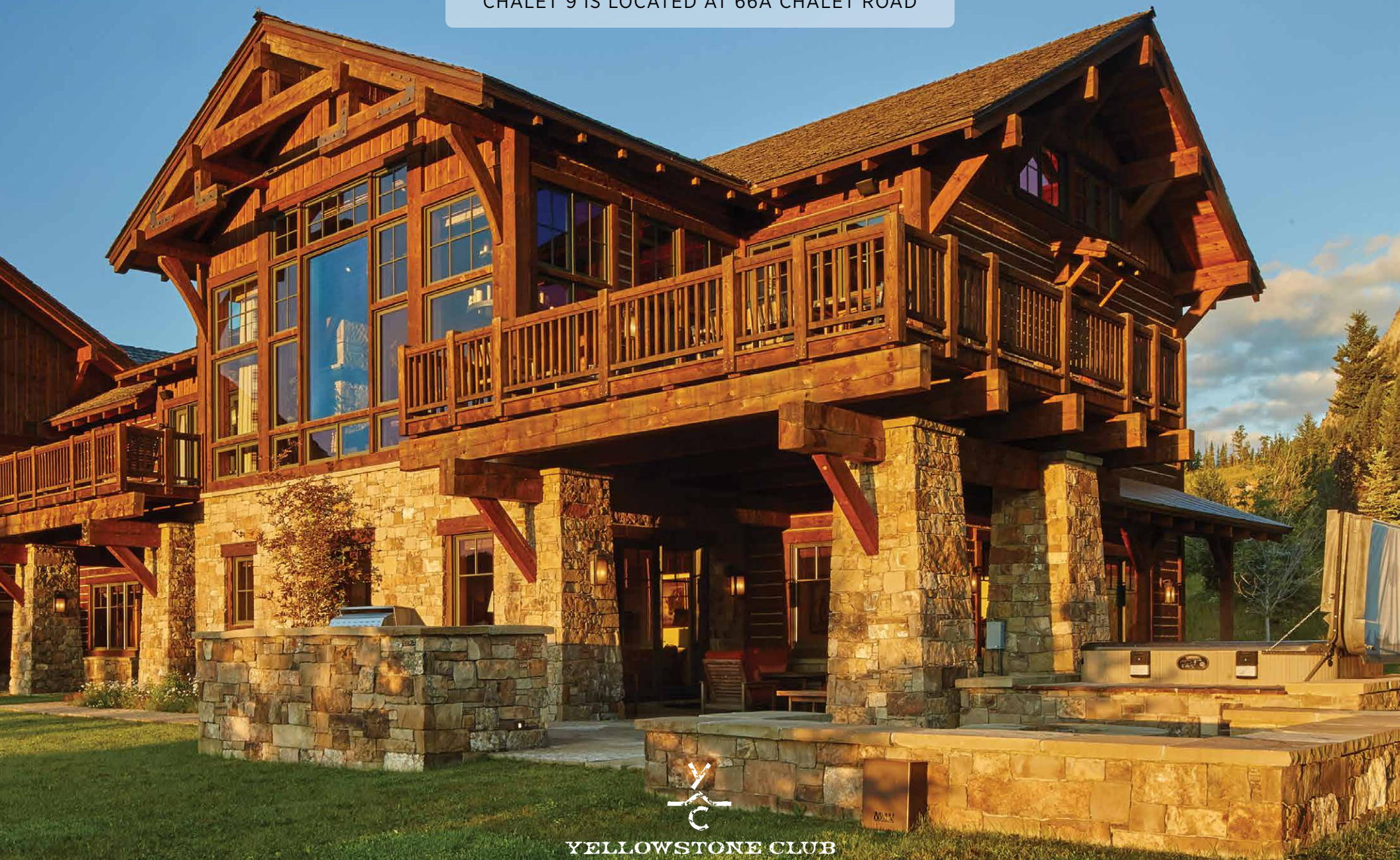


- CHALET 9 -

CHALET 9 IS LOCATED AT 66A CHALET ROAD



YELLOWSTONE CLUB



Deck with views of the Gallatin Range

- CHALET 9 -

66A CHALET ROAD

With quite possibly some of the best ski access in the entire community, Chalet 9 is a warm, inviting home that exudes tranquility and good taste.

Located just off the Pioneer Run in the Yellowstone Club, the chalet is nearly 6,500 square feet of wonderfully grained wood and textured stone. You'll walk into an open living room with a crackling fireplace to draw your eye and warm your bones, while entertaining guests and cooking a great meal in the airy style of the adjoining kitchen. A center island, large stove and attractive appliances throughout the kitchen are the cornerstones of your entertaining. An earthy, welcoming, rustic, yet modern feel permeates throughout as you enjoy your company beneath the stunning big beams of the ceiling. The dining room draws guests into an atmosphere that is all Montana. Huge windows add to the openness, with unsurpassed views of the surrounding mountains cloaked in pine and fir. A balcony just off the kitchen nook invites you out into the open, clean air of the mountains.

The spacious master bedroom is off the living room with a private balcony for intimate conversation or reading a good book. The master bath with its fixtures of tasteful copper and accents of wood and stone has a wonderful, large copper tub at its heart.

Also on the main upper floor is a roomy guest bedroom with windows opening to the native landscaping of the mountains.

Downstairs, there's even more room for guests and family with three guest bedrooms, all with their own baths. After a long day of skiing, you can step into the sauna, enjoy the upstairs hot tub, or relax in the spacious family room.

Finally, there is ample storage in the two car garage of this stunning and restful home on the mountain.





Kitchen & Breakfast Nook

– CHALET 9 –

66A CHALET ROAD

FEATURES

- Immediate ski access via the Pioneer Ski Run
- 6,461 total heated livable square footage
- 5 bedrooms
- 7 bathrooms
- 2 car garage
- Spectacular views of Lone Peak and the Gallatin Range
- Easy and quick access to all the base area amenities

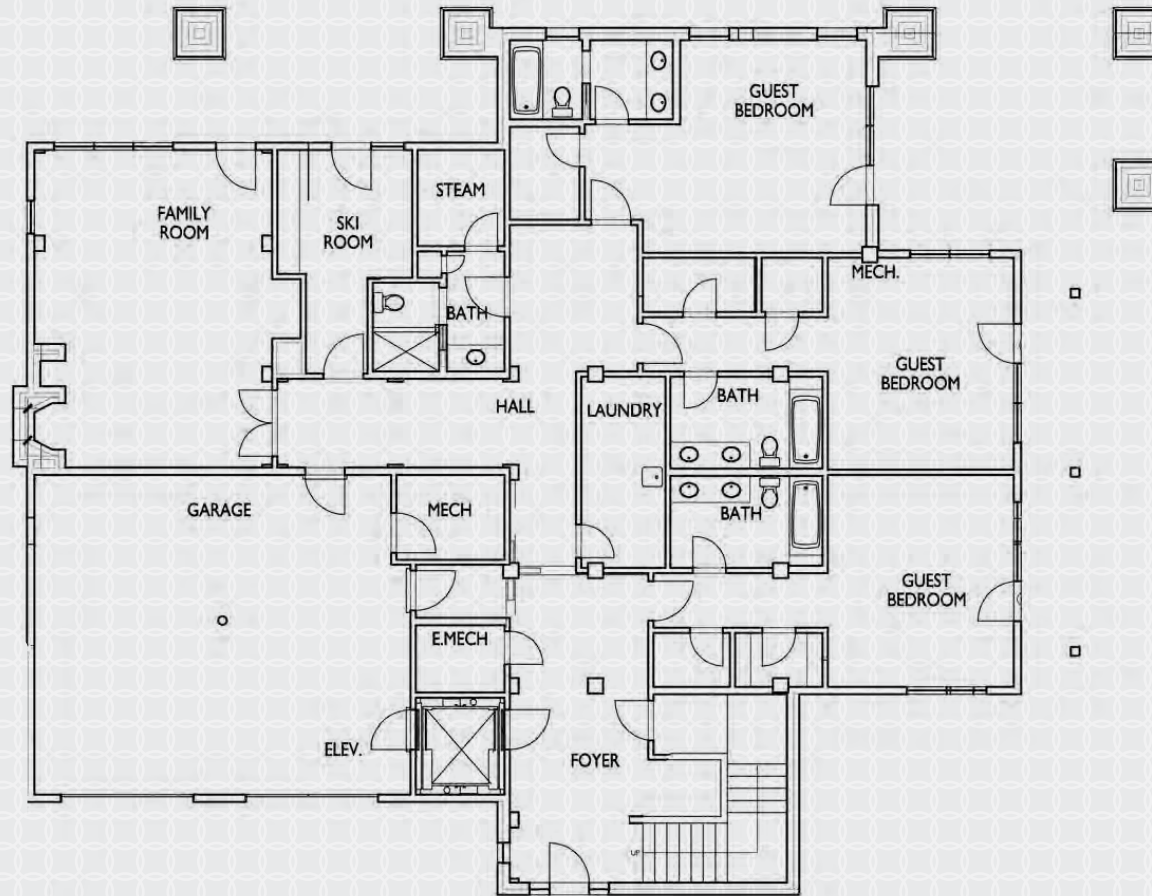
This residence is located within Yellowstone Club, a 13,600 acre private, gated community located in Big Sky, Montana. Yellowstone Club is the world's only private ski and golf community, encompassing thousands of acres of private skiing along with a championship golf course designed by Tom Weiskopf. Additionally, whether looking to savor spectacular mountain panoramas, explore the vast wilderness or enjoy high-quality amenities, Yellowstone Club offers everything from fly fishing, hiking and biking trails to fine dining and spa services. Professional SnowSports, golf and outdoor recreation programs, along with dedicated children's activities, round out the unique Montana experience that is Yellowstone Club.



Mountain Biking at YC

- CHALET 9 -

6,461 TOTAL HEATED LIVABLE SQUARE FOOTAGE

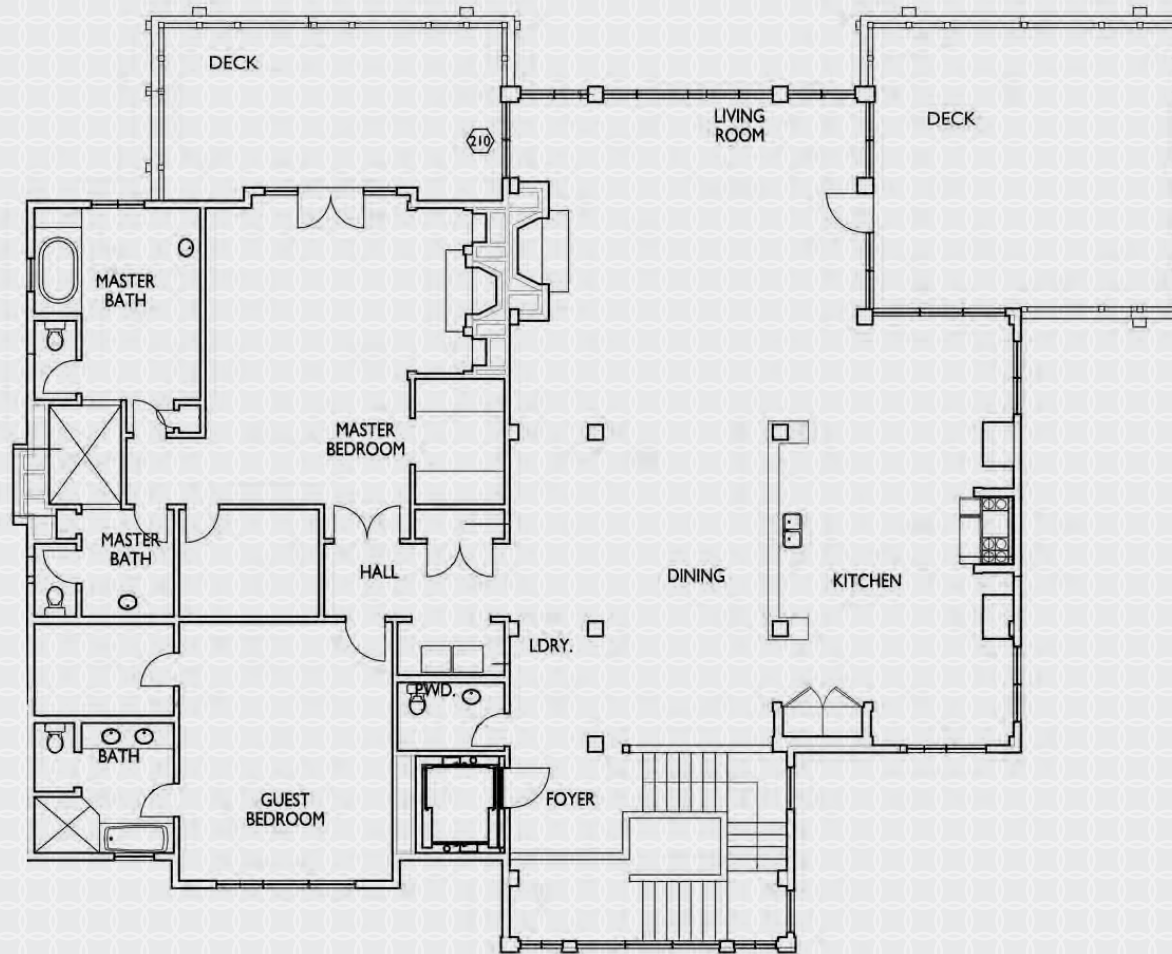


MAIN LEVEL

*3 Guest Bedrooms / 3 Guest Bathrooms
Family Room / Ski Room / Bath & Steam Room
Laundry Room / 2-Car Garage / Ski Access*

- CHALET 9 -

6,461 TOTAL HEATED LIVABLE SQUARE FOOTAGE

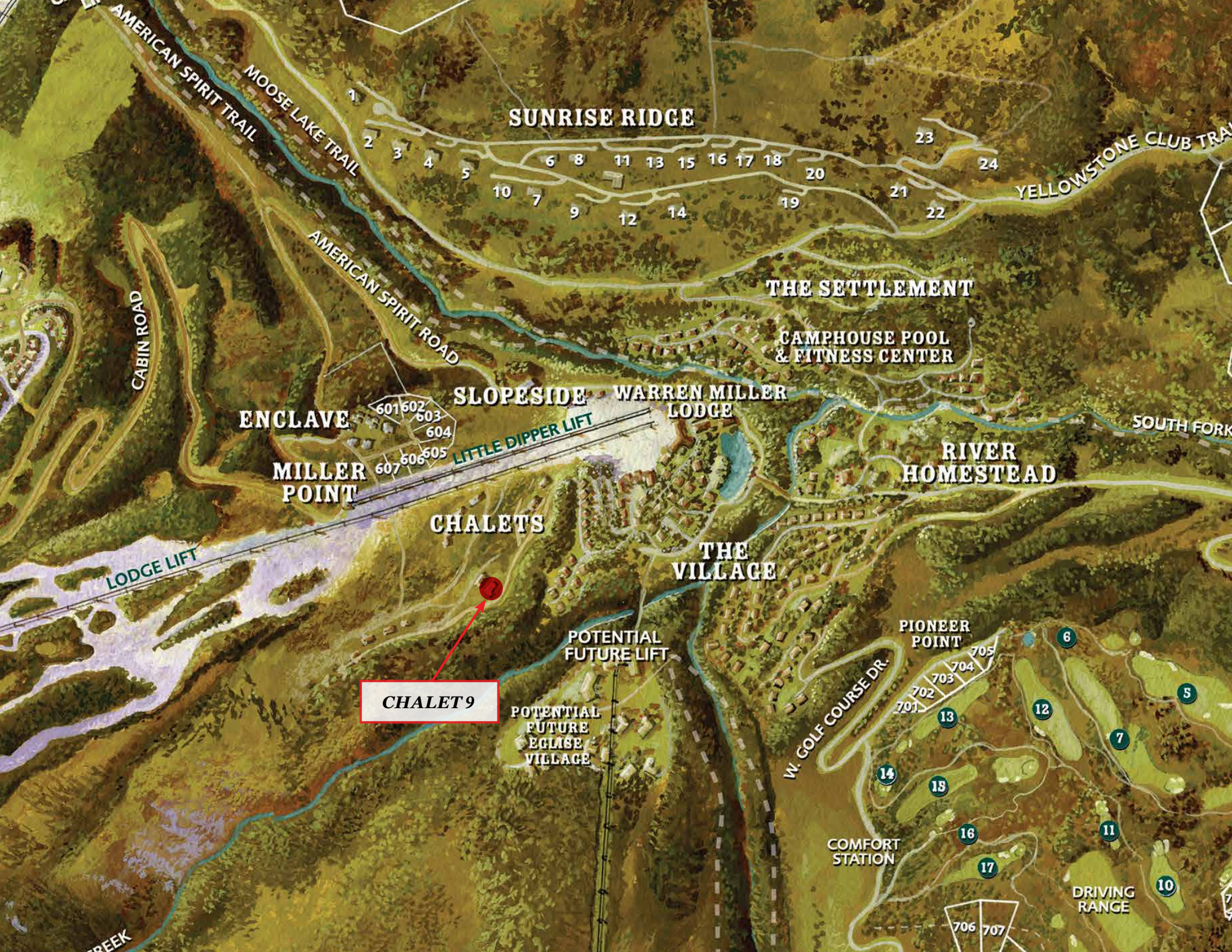


UPPER LEVEL

Master Bedroom / Master Bathroom

Guest Bedroom / Guest Bathroom / Living Room / Powder Room

Kitchen / Dining Room / Laundry Room



SUNRISE RIDGE

THE SETTLEMENT

SLOPESIDE

WARREN MILLER LODGE

ENCLAVE

RIVER HOMESTEAD

CHALETS

THE VILLAGE

CHALET 9

PIONEER POINT

POTENTIAL FUTURE EGLISE VILLAGE

COMFORT STATION

DRIVING RANGE

W. GOLF COURSE DR.

CAMPHOUSE POOL & FITNESS CENTER

MILLER POINT

POTENTIAL FUTURE LIFT

LODGE LIFT

LITTLE DIPPER LIFT

CABIN ROAD

AMERICAN SPIRIT ROAD

YELLOWSTONE CLUB TRAIL

MOOSE LAKE TRAIL

AMERICAN SPIRIT TRAIL

SOUTH FORK

CREEK

601 602 603 604 605 606 607

701 702 703 704 705

706 707

1 2 3 4 5 6 7 8 9 10 11 12 13 14 15 16 17 18 19 20 21 22 23 24

5 6 7 10 11 12 13 14 15 16 17



Master Bedroom



Kitchen



Dining Room



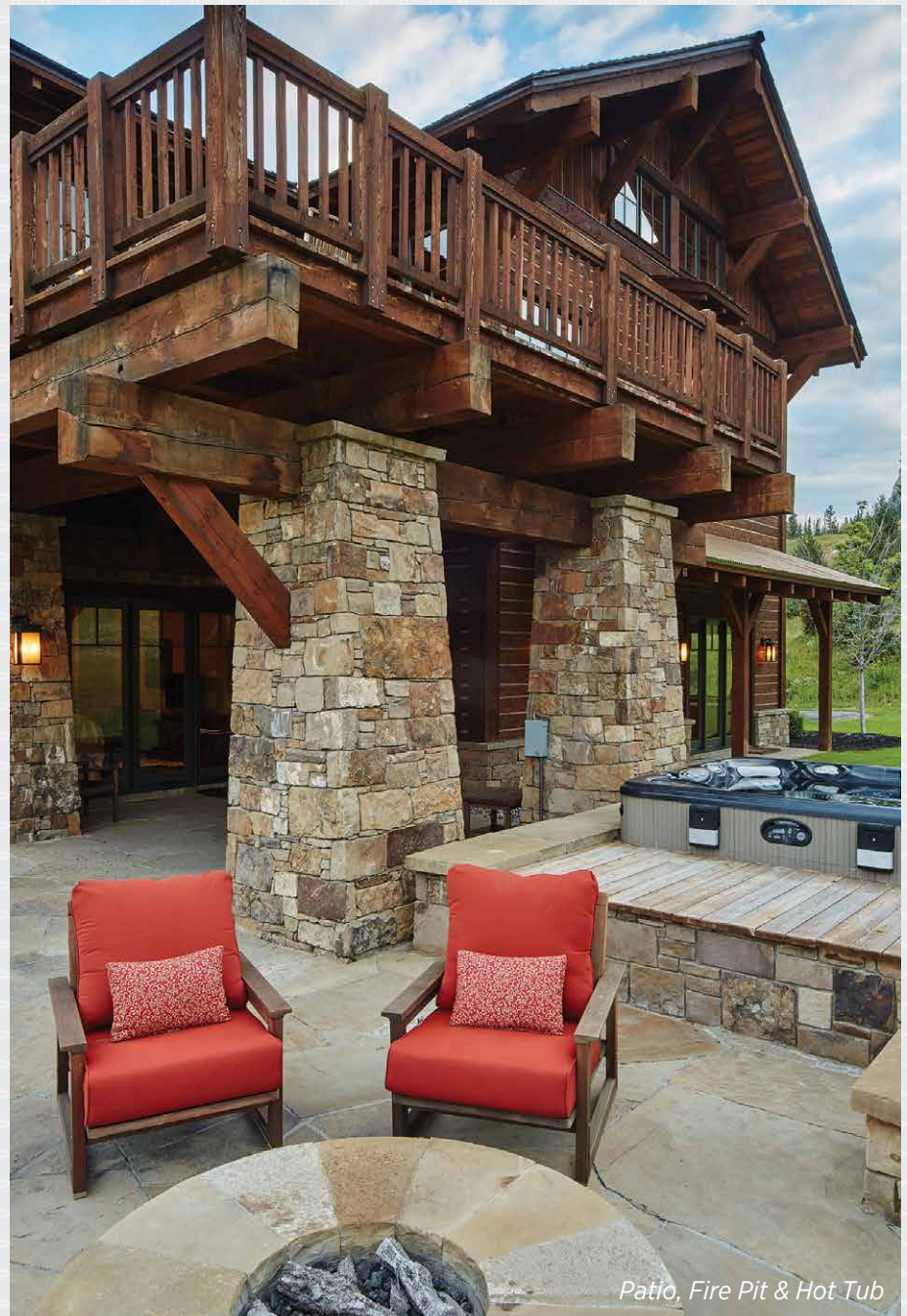
Living Room



Master Bathroom



Kid's Bedroom



Patio, Fire Pit & Hot Tub



YELLOWSTONE CLUB

For more information about this property and its pricing please contact YC Realty.

(888) 700-7748 | (406) 995-4900 | yccsales@yellowstoneclub.com | P.O. Box 161097 | Big Sky, Montana 59716

www.yellowstoneclub.com

Photography by Whitney Kamman, Tony Denim and Ryan Day Thompson

All information deemed reliable, but not guaranteed. All acreages and square footages are estimates. The purchase of a home or homesite does not include membership in Yellowstone Club, or any right to use the private club facilities. Ownership of a home/homesite includes an obligation to pay assessments to a property owner's association. Please ask a sales associate for details. Photographs are representational of the approximate view corridors from the home. Livable square footages listed in this marketing piece are based upon the calculation of only the heated and livable areas within the exterior walls of the property and said square footages are deemed reliable, but not guaranteed. All acreages and square footages are estimates and are provided by the Seller or his designated representative; these measurements should not be a substitute for one's own evaluation and investigation. Ski accessibility is a relative term and can have different implications and meanings depending on the individual. One should investigate fully the property as it relates to its potential ski access and determine for themselves the degree of ski access the property might have or be developed. Buyer acknowledges and agrees that neither the Seller, the Broker, the Sales Associate nor any other real estate representative of the Yellowstone Club or its related affiliates have made any warranties or representations upon which Buyer has relied concerning the ski-in ski-out accessibility of the property. The determination of the level of ski access that a property might have will be the Buyers sole determination. 08/15

